

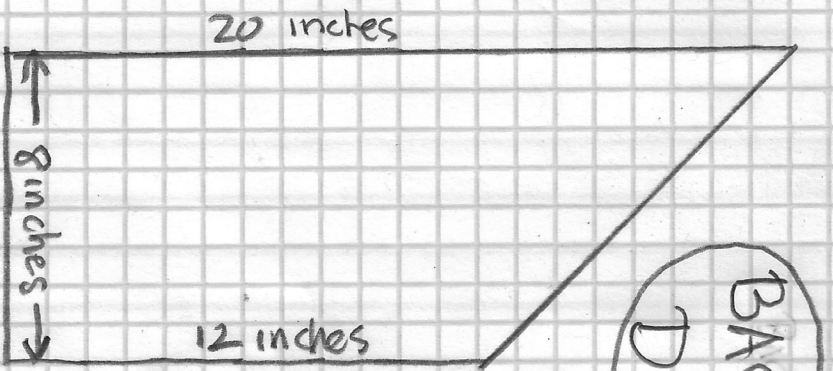
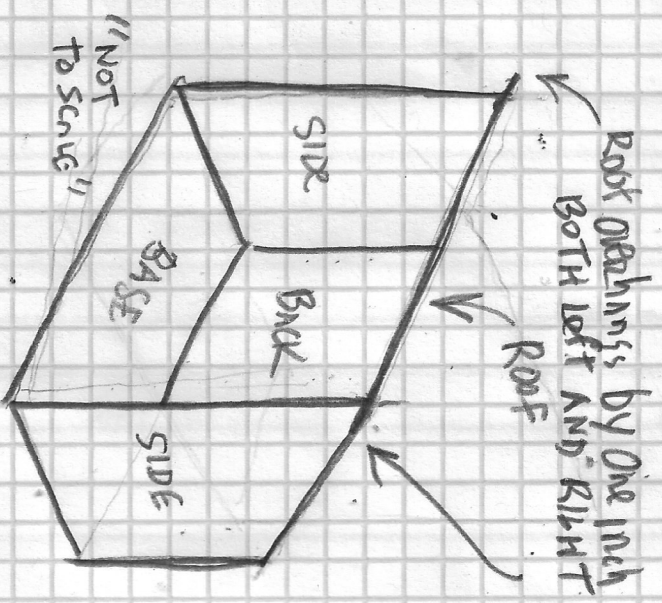
THIS SHEET IS TO SCALE; EVERY SQUARE = 1 inch

ROOF  
 11 1/2" x 26"  
 MAKE 2  
 AND ALTERNATE CORRUGATIONS  
 GIVE the 2 together

ABOUT TAILS  
 ROOF PIECE:  
 MAKE A  
 SECOND ONE  
 FOR  
 FRONT HALF  
 OF  
 DOLLHOUSE

BACK OF DOLLHOUSE  
 24" x 12"  
 MAKE 2  
 AND ALTERNATE CORRUGATIONS  
 GIVE the 2 together

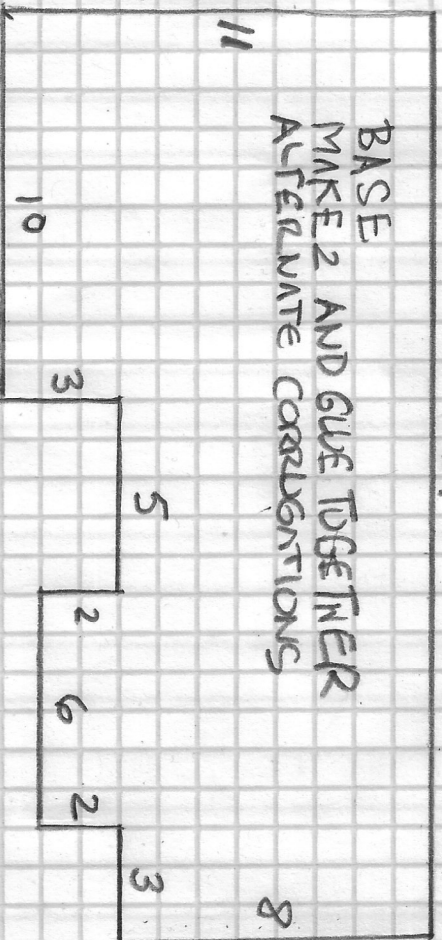
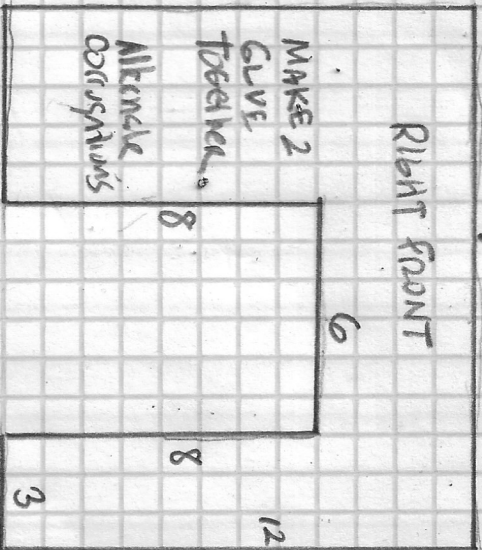
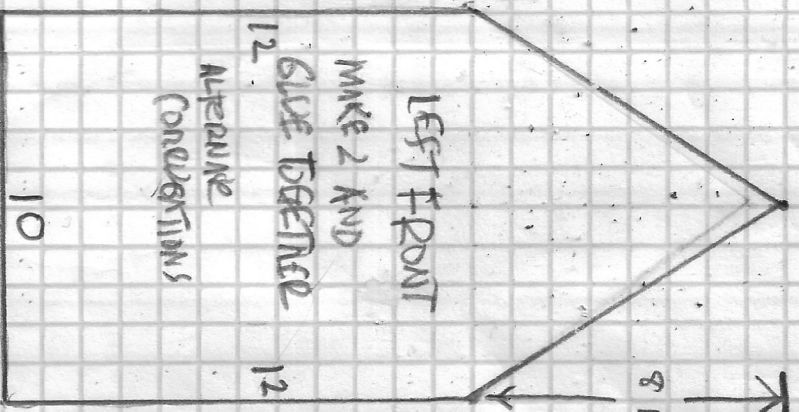
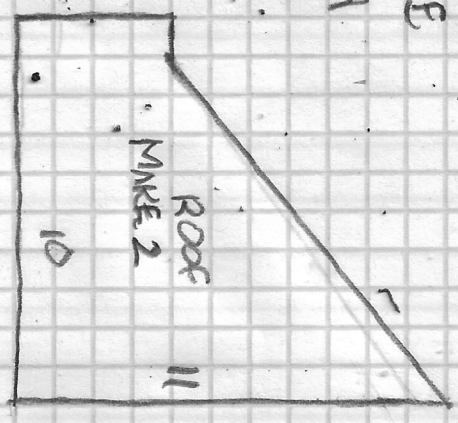
BASE  
 24" x 8 inches  
 MAKE 2  
 AND ALTERNATE CORRUGATIONS  
 GIVE the 2 together



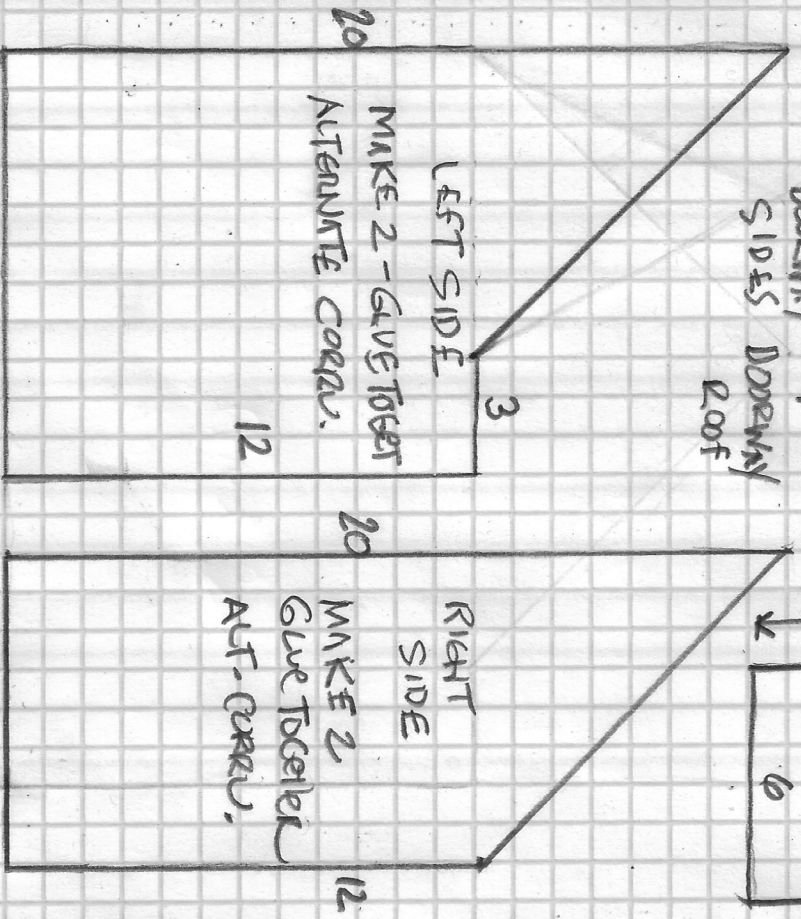
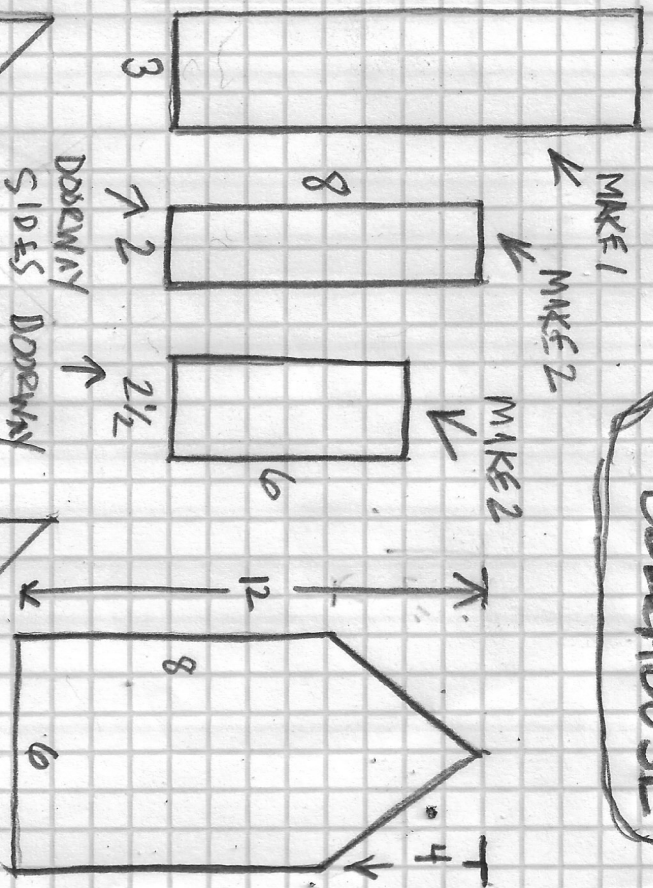
BACK HALF OF  
 DOLLHOUSE

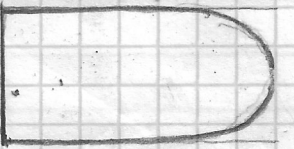
SIDE  
 MAKE 4 of them  
 GIVE 2 together  
 AND another 2 together  
 SO you end up with  
 2 sides.

THIS SHEET IS TO SCALE  
 EVERY SQUARE = 1 INCH

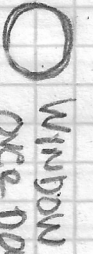


FRONT HALF OF  
 DOLLHOUSE

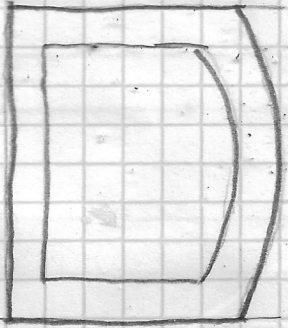




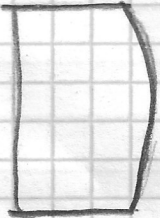
DOOR  
 $3\frac{1}{2} \times 7$ "  
 only 1 layer  
 1  $\frac{3}{4}$ " DIAMETER CIRCLE



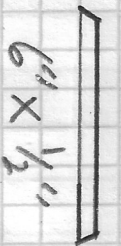
WINDOW  
 OVER DOOR



PICTURE  
 WINDOW  
 FRAME  
 8" WIDE  
 7" tall at highest point



PICTURE  
 WINDOW  
 $5\frac{1}{4}$  WIDE  
 $3\frac{3}{4}$  HIGH

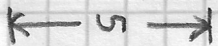
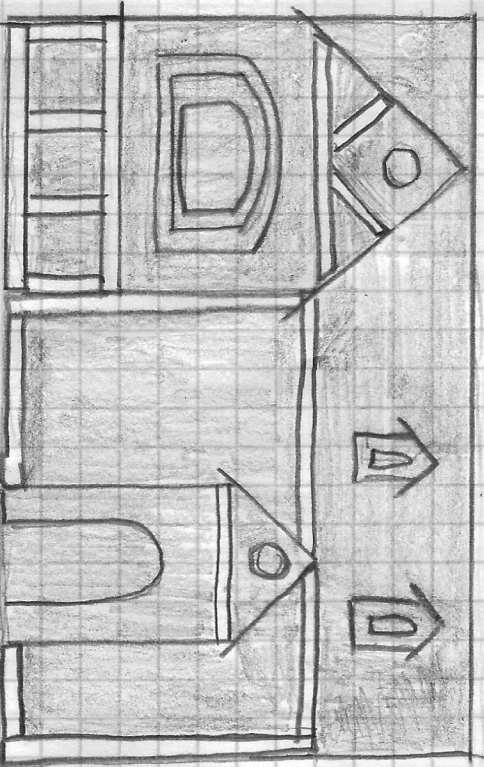


$6 \times \frac{1}{2}$ "  
 BEAM  
 OVER  
 DOOR



WINDOW  
 OVER PICTURE  
 WINDOW  
 2" DIAMETER  
 CIRCLE

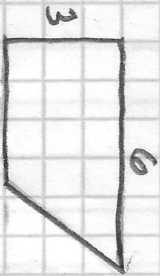
VARIOUS TRIM IS  $\frac{1}{2}$ " WIDE  
 UNSHADED PARTS



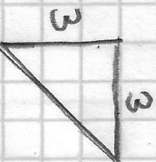
2 Gable, single layer  
 MAKE 2 OF THEM



Gable Window  
 $1\frac{1}{2} \times 2\frac{1}{2}$   
 MAKE 2 OF THEM



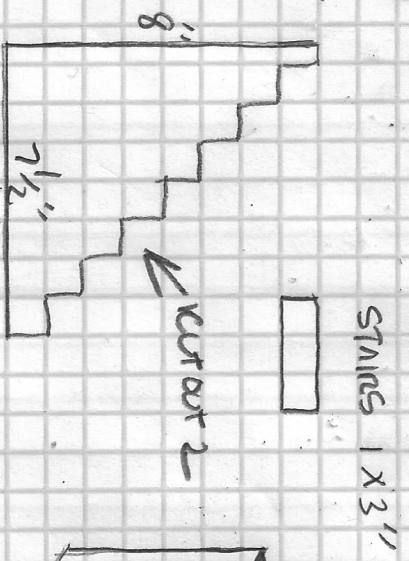
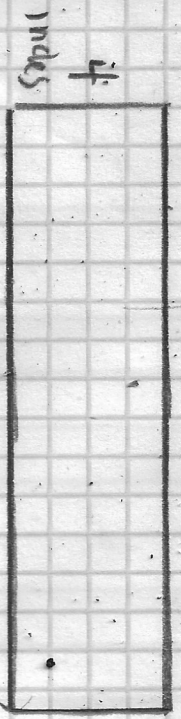
Gable Roof  
 MAKE 4



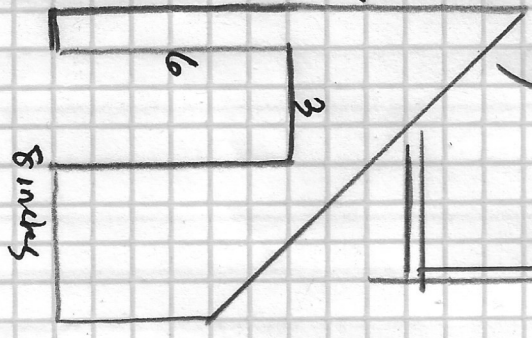
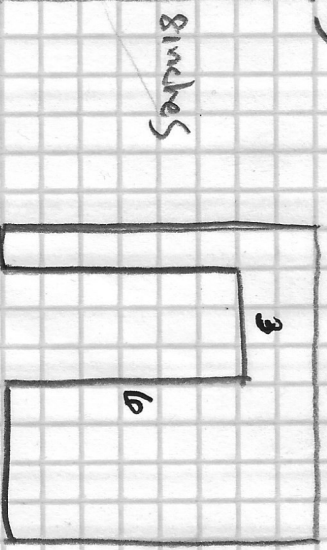
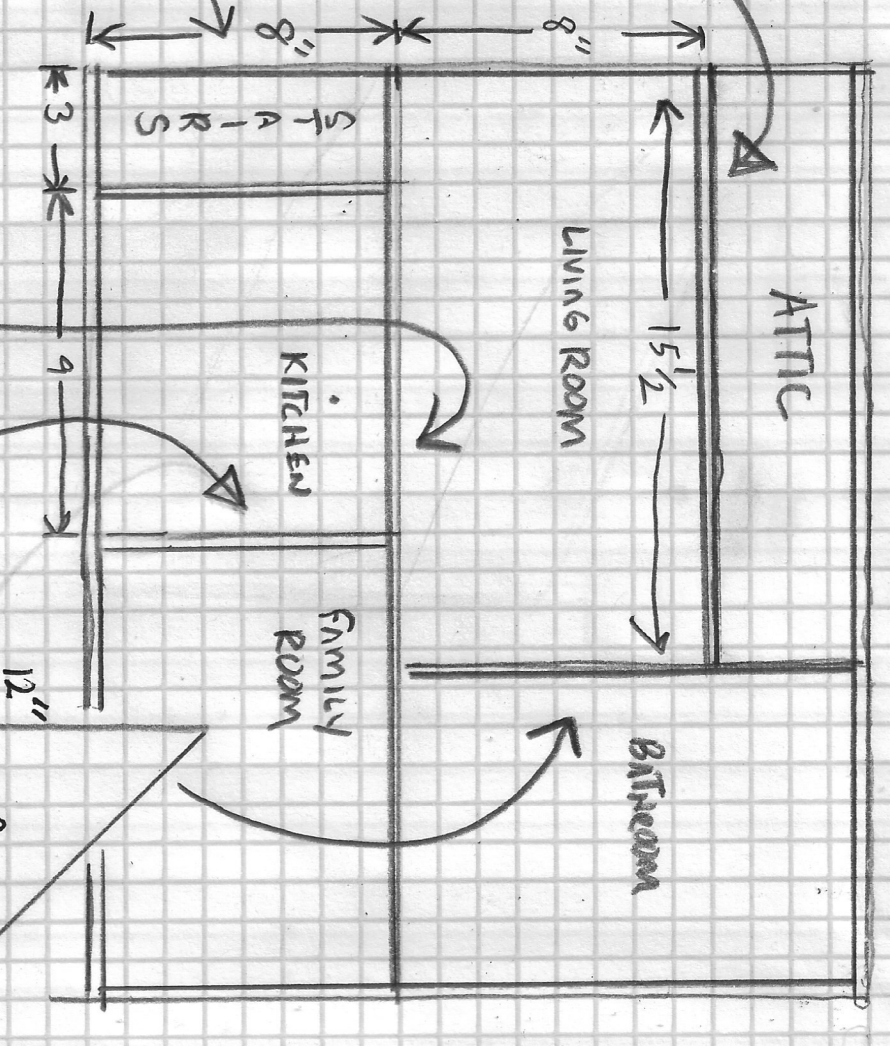
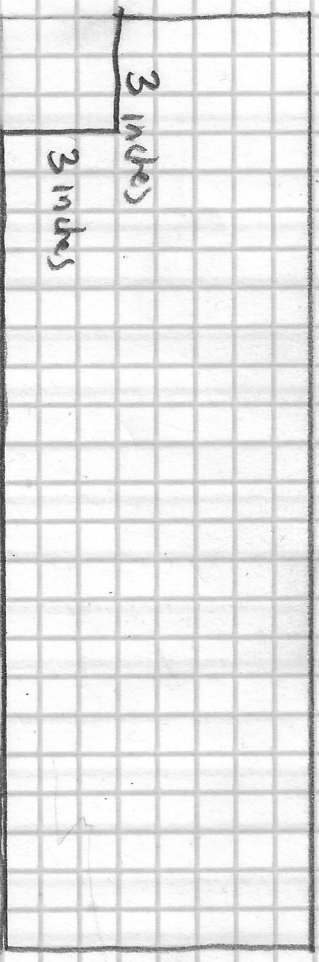
Gable Sides  
 MAKE 4

ALL OF THESE ORNAMENTS ARE SINGLE LAYER THICK

TO SCALE OF THE PARTS YOU MAKE  
 EVERY SQUARE = 1 inch  
**BACK HALF OF DOULHOUSE**  
 INTERIOR Double Layer

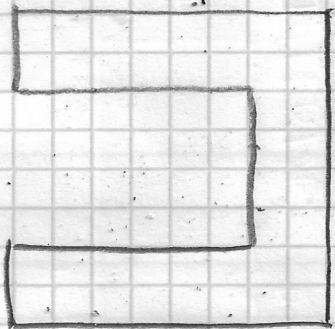


BACK HALF OF DOULHOUSE  
 2nd FLOOR  
 CUT OUT TWO and glue together alternating corrugations

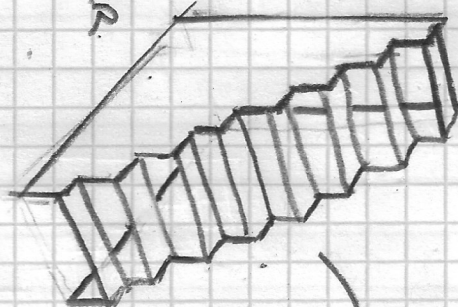


# FRONT HALF OF DOLLHOUSE INTERIOR

Drawing is to scale  
Every square = 1 inch



DOUBLE LAYER OF CARDBOARD



MAKE 2 SINGLE LAYER

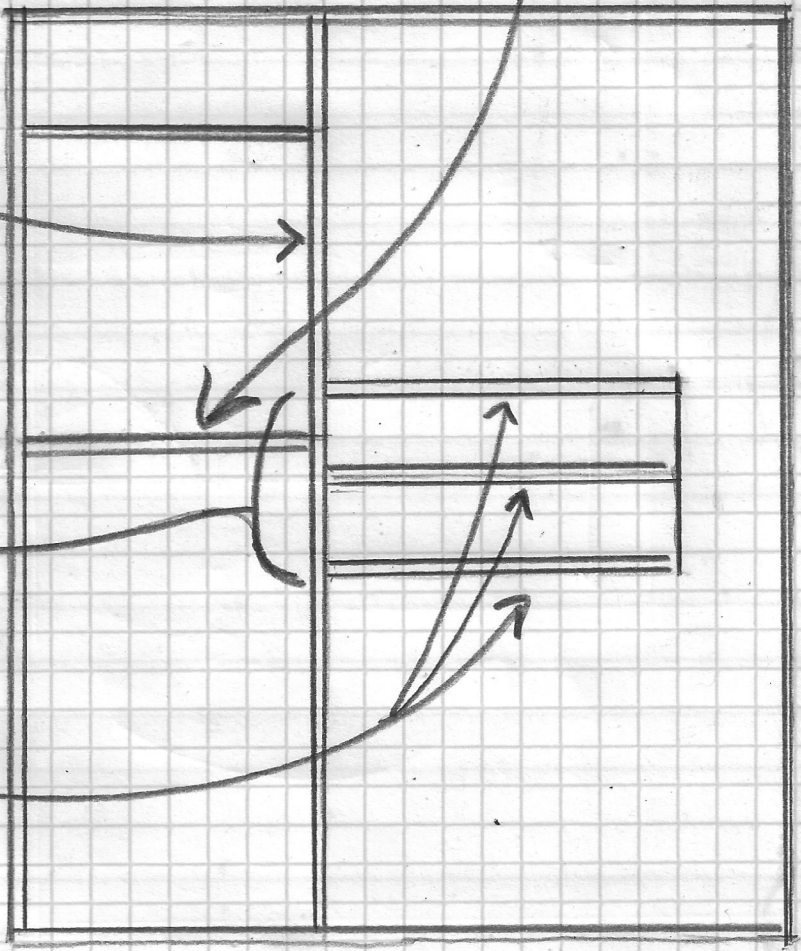
1x3

8

7 1/2

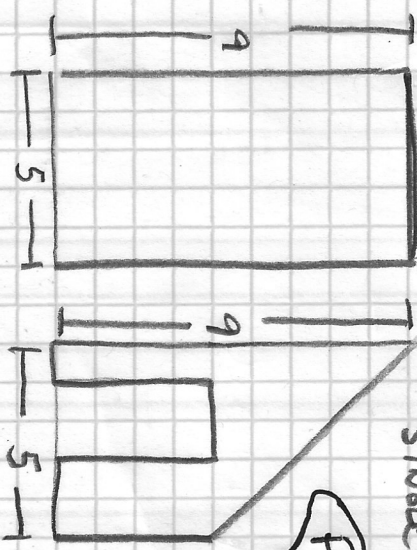
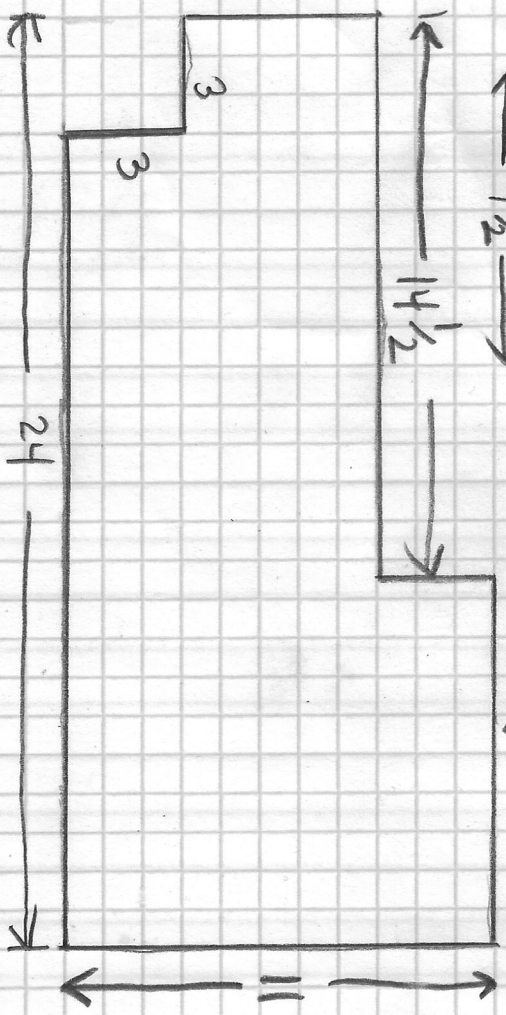
14 1/2

DOUBLE LAYER



CLOSET WALL MAKE 1 SINGLE LAYER

CLOSET WALLS MAKE 3 SINGLE LAYER



PAGE 5