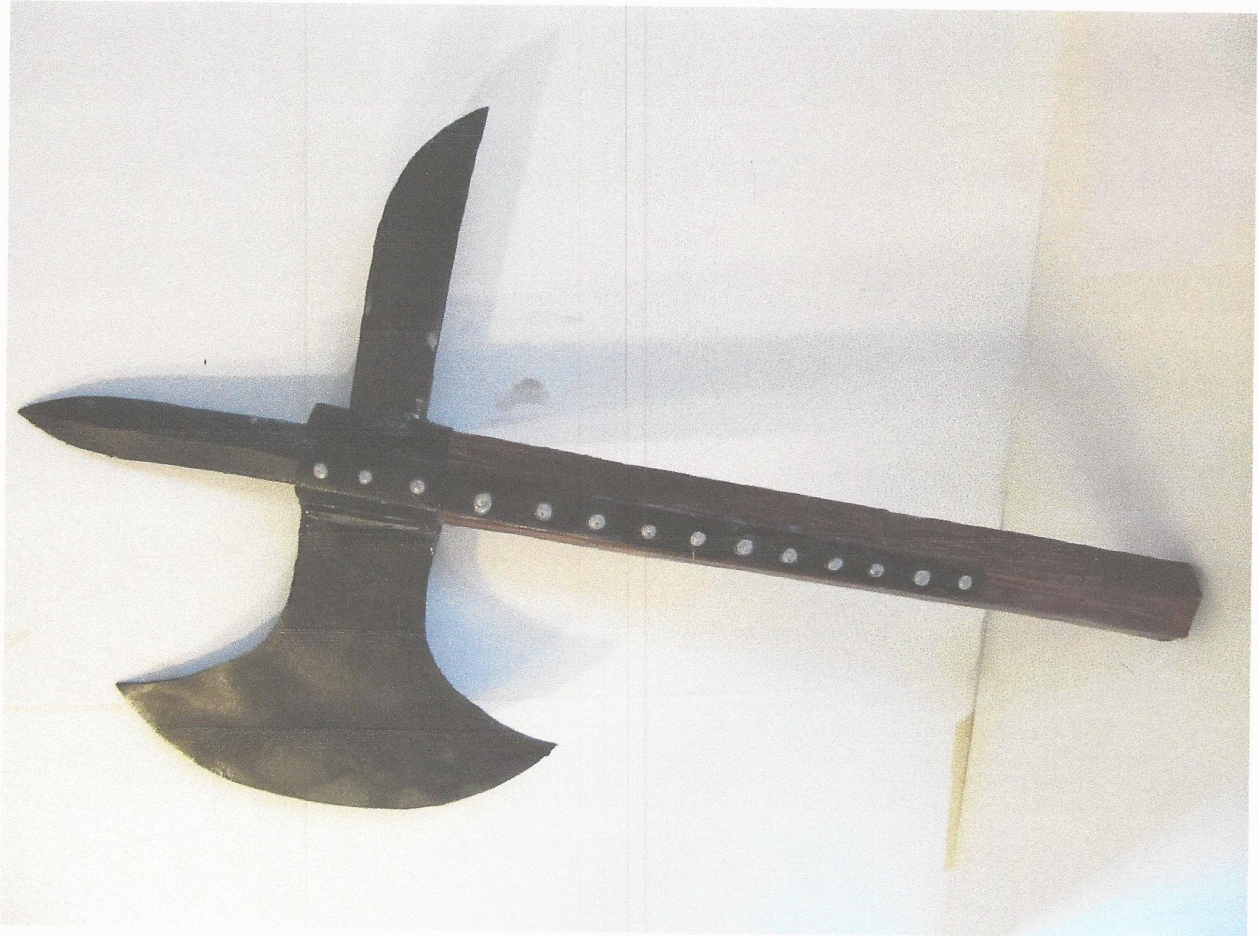
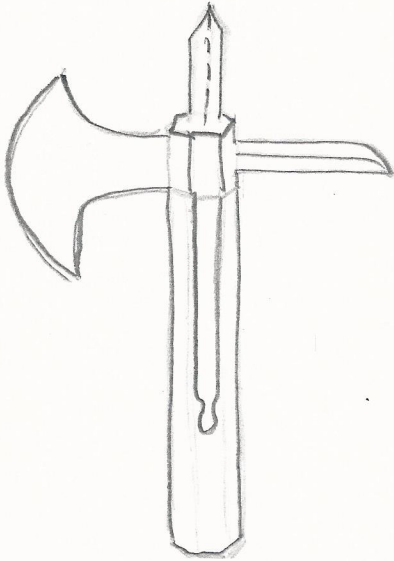


Make a Medieval Knight's Axe

(Template)

This template is also used for the axe to the back





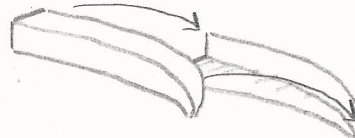
- ① CUT, SCORE, & TRIM FOAM BOARD TO MAKE HEXAGONAL HANDLE.



APPLY GLUE, ROLL UP & TIE UNTIL DRY

- ② GLUE TEMPLATE TO CEREAL BOX & CUT OUT. SCORE ON THE DOTTED LINES & FOLD.

- ③ A1 & A2 GLUE TO TOP & BOTTOM OF HANDLE
GLUE B1 & B2 TOGETHER TO MAKE A 3D SAKE

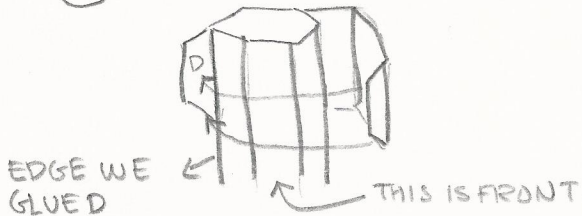


REPEAT SAME WITH C1 & C2



- ④ PAINT HANDLE, LET DRY

- ⑤ GLUE D AROUND TOP OF HANDLE. GLUE & PINCH TABS TOGETHER.



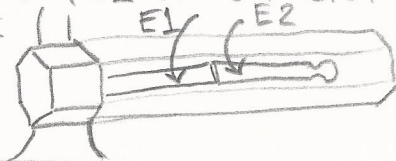
- ⑥ GLUE B TO OPPOSITE SIDE OF TAB FROM D.



- ⑦ GLUE F1 & F2 OVER D TAB & TO EACH OTHER.

F2 DIRECTLY ON TOP

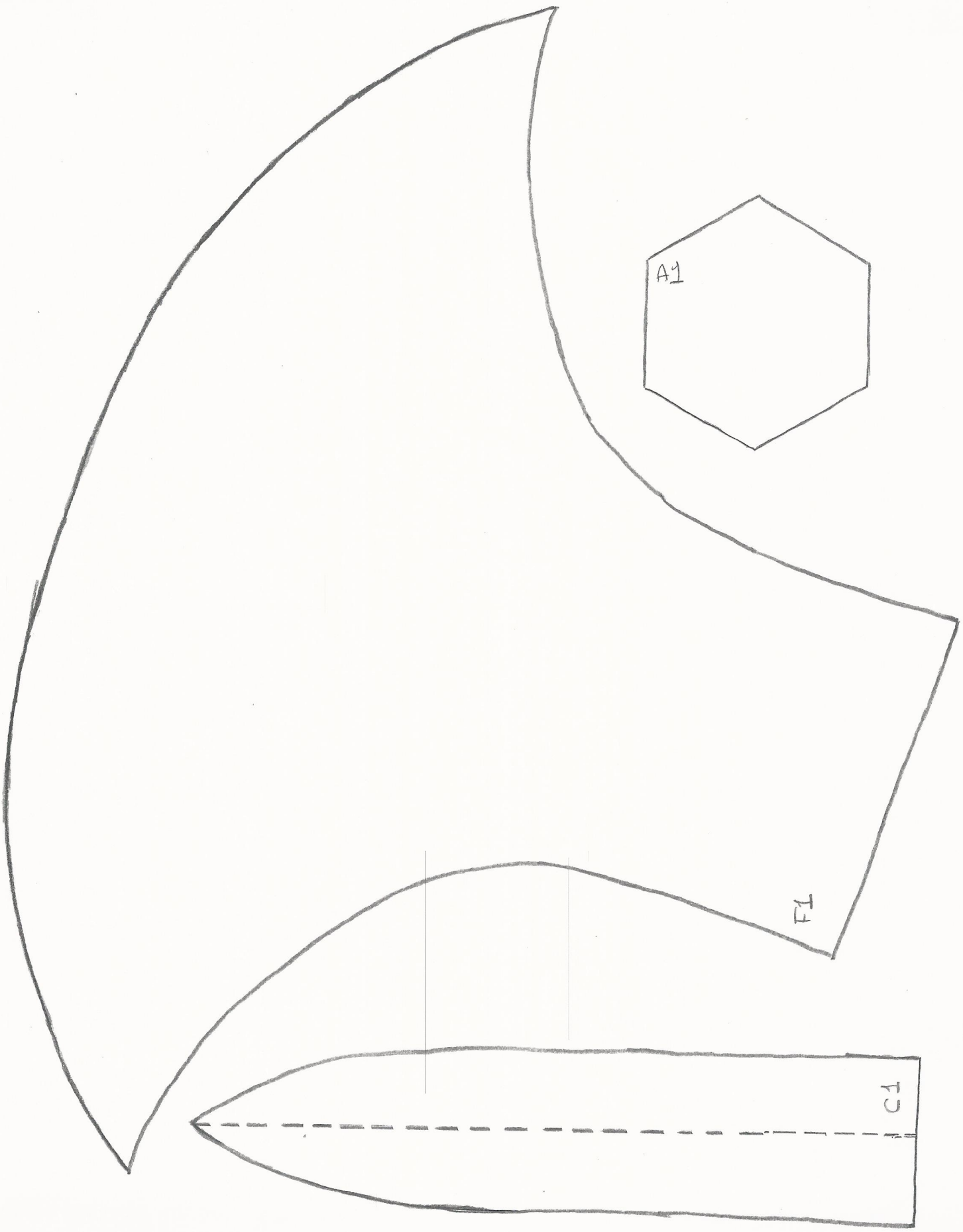
- ⑧ GLUE E1 & E2 ONTO FRONT OF HANDLE

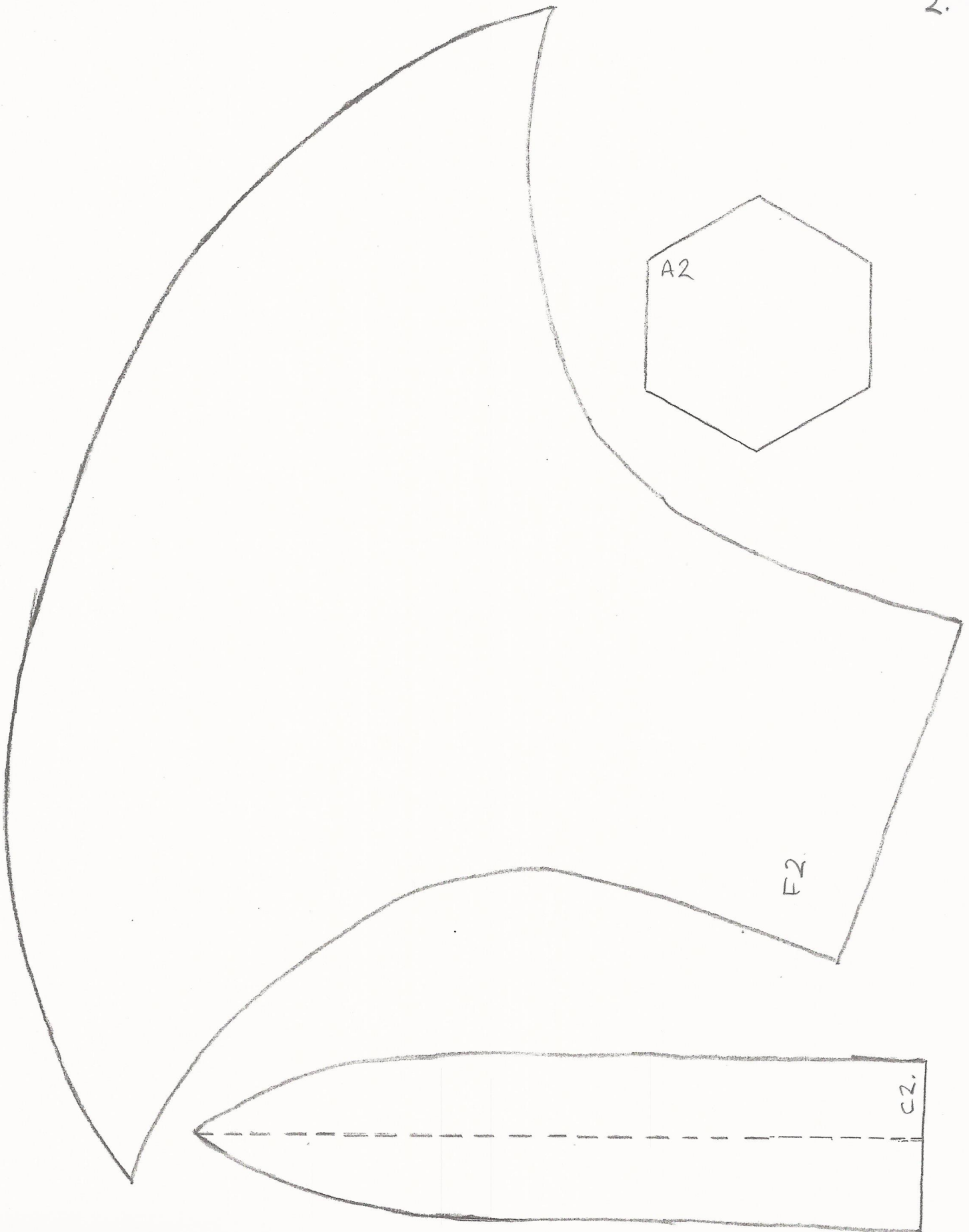


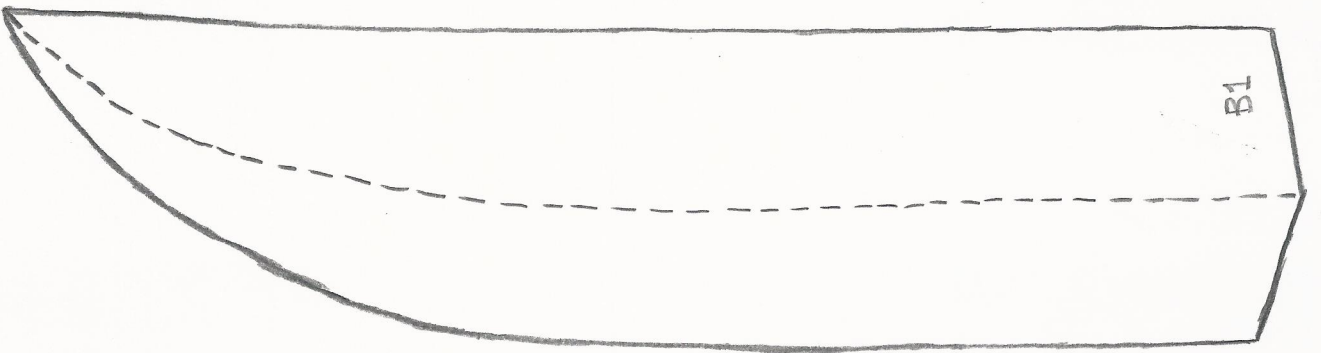
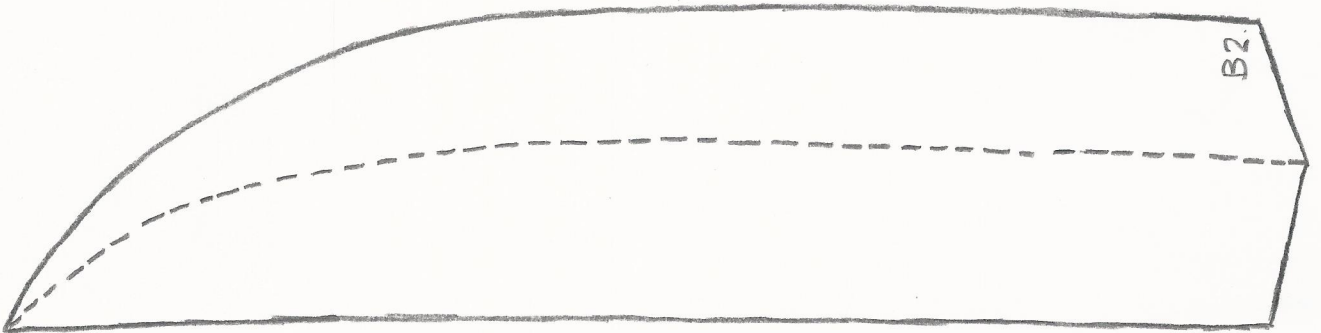
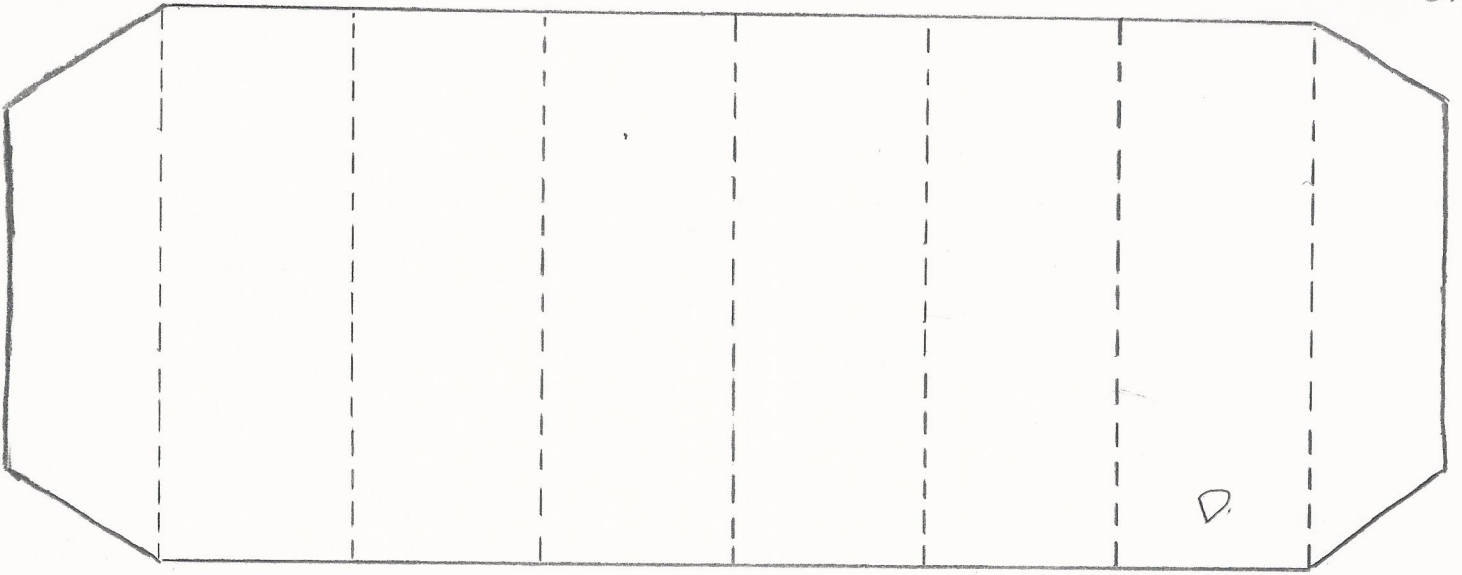
- ⑨ GLUE C DIRECTLY ON TOP OF HANDLE



- ⑩ PAINT & ADD DETAILS.









SCORE
CUT THROUGH
TOP
PAPER
& FOAM
LEAVE
BOTTOM
PAPER
INTACT

← FOLD
OVER
FOAM &
CUT THIS
OFF AT
AN ANGLE
MAKING
SURE NOT
TO CUT
THROUGH
BOTTOM
PAPER



HANDLE

← CUT THIS END & MATCH UP TO PAGE 5



↑ CUT THIS END & MATCH UP WITH PAGE 4



SCORE
CUT THROUGH
TOP
PAPER
& FOAM
LEAVE
BOTTOM
PAPER
INTACT

← FOLD
OVER
FOAM &
CUT THIS
OFF AT
AN ANGLE
MAKING
SURE NOT
TO CUT
THROUGH
BOTTOM
PAPER

HANDLE

