

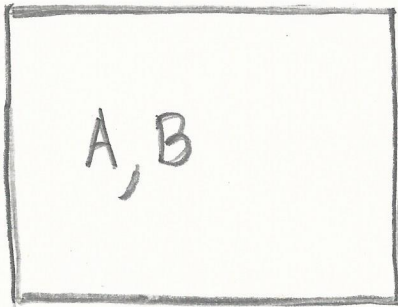
# Make the Kirkhammer from Bloodborne

(Template)

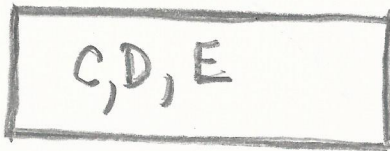
## Bloodborne Kirkhammer



PIECES  
For the Hammer head

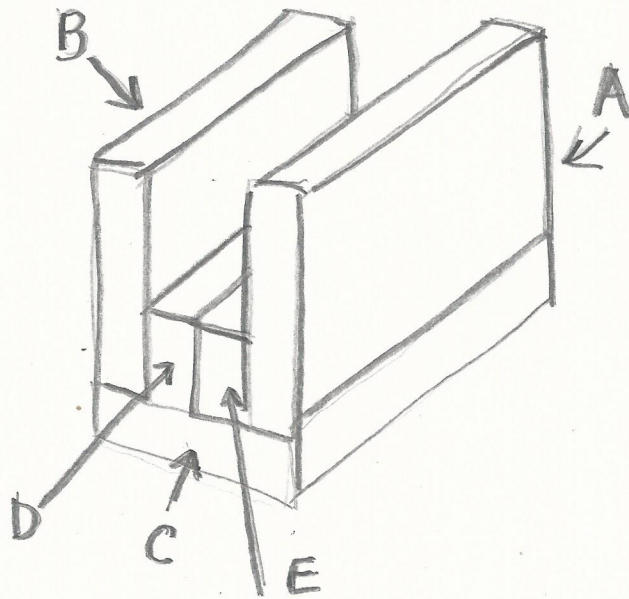


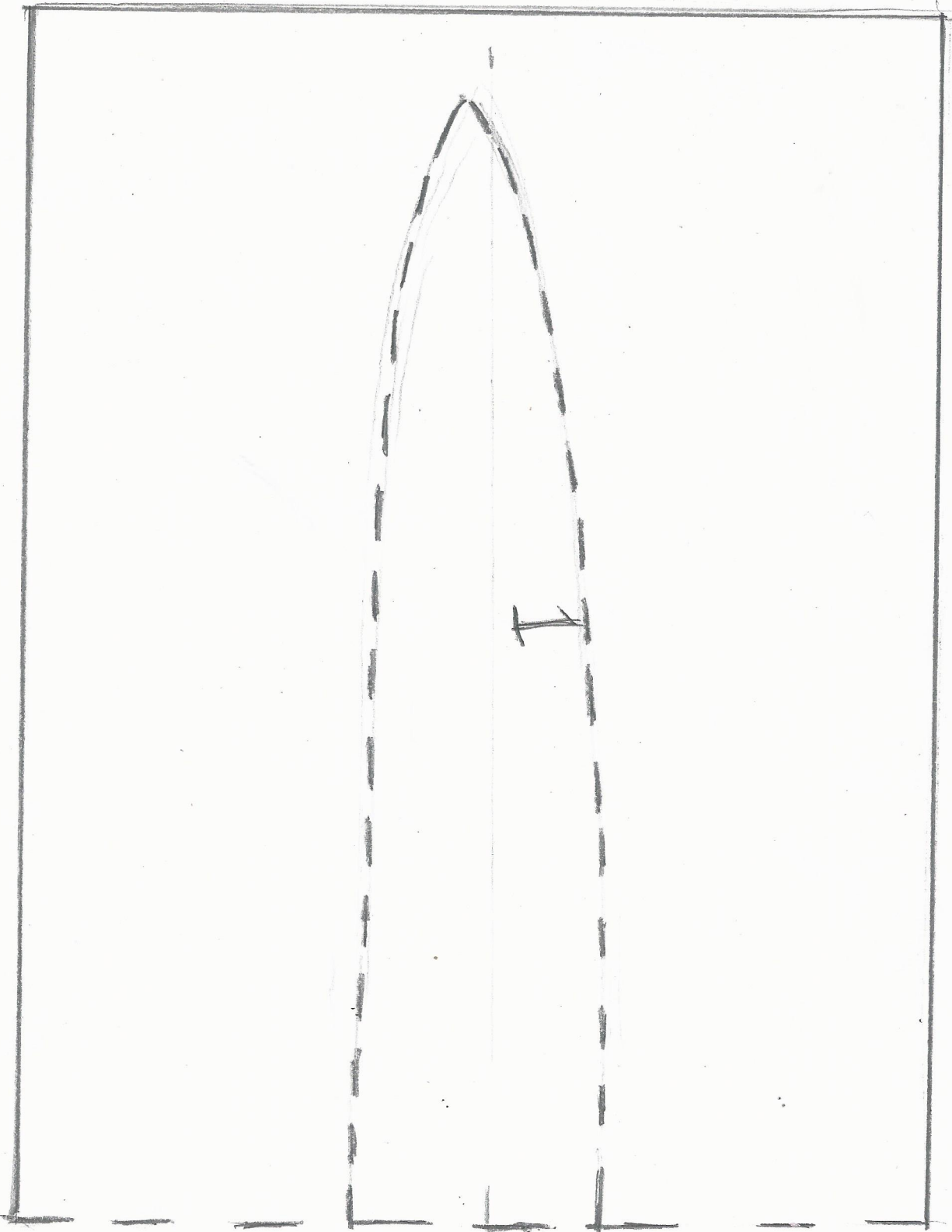
16 x 24"

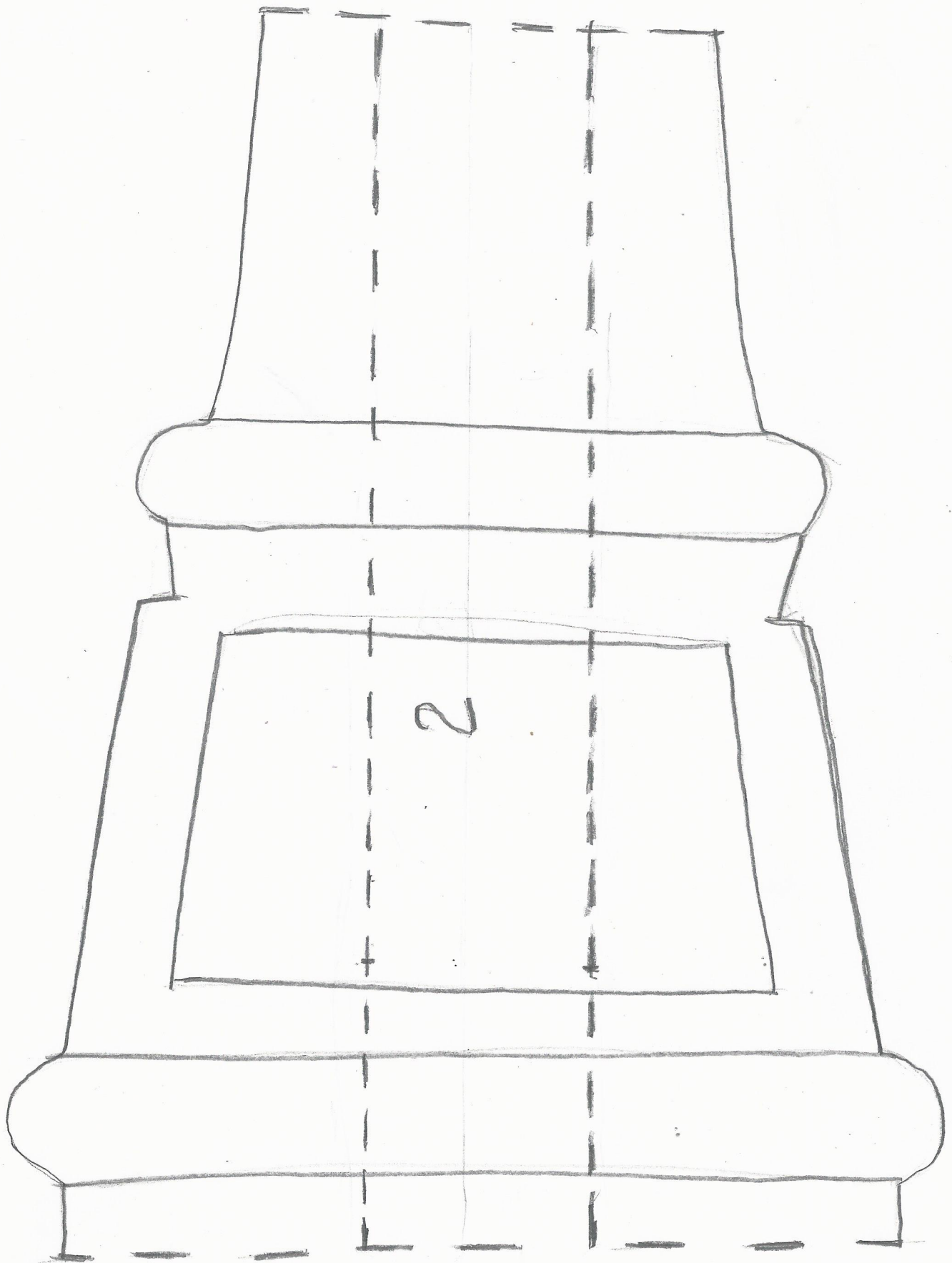


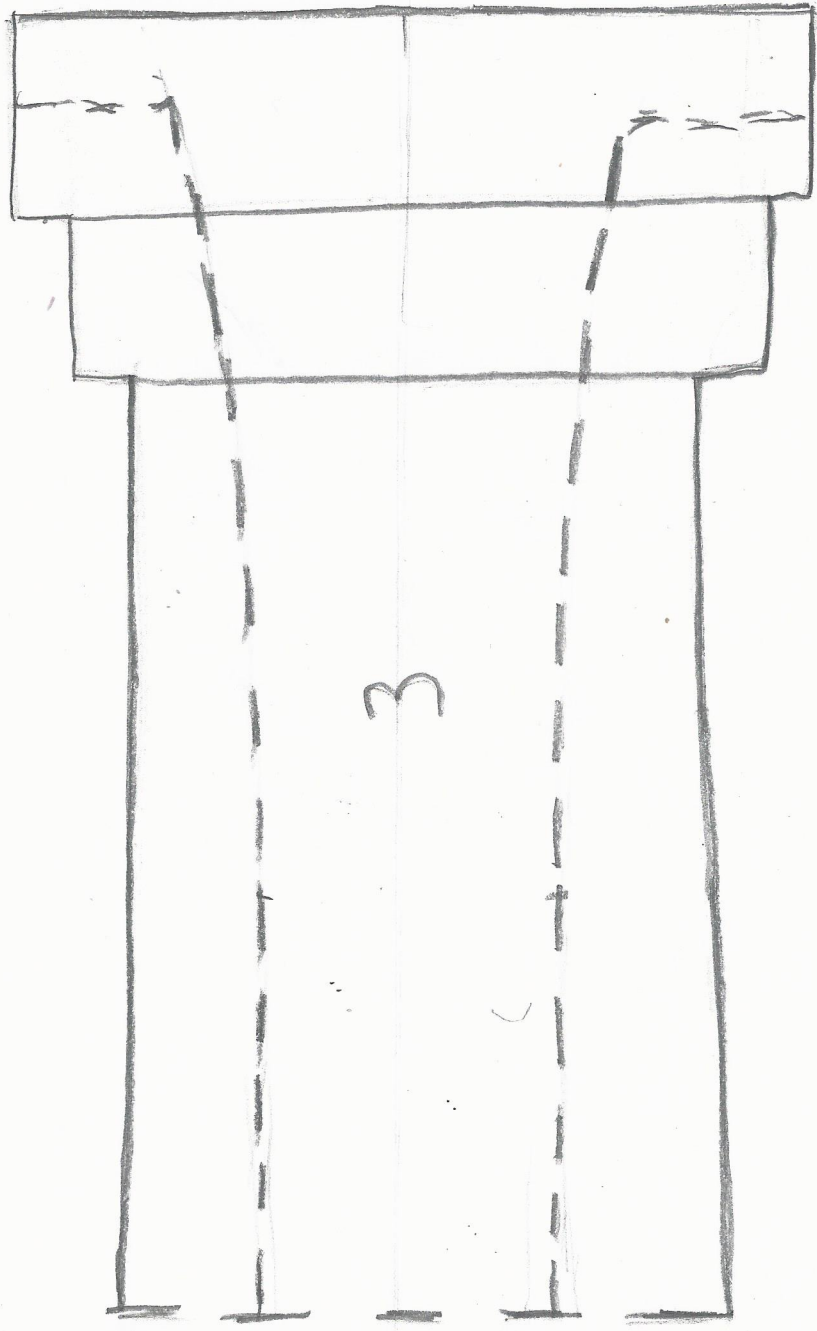
8 x 24"

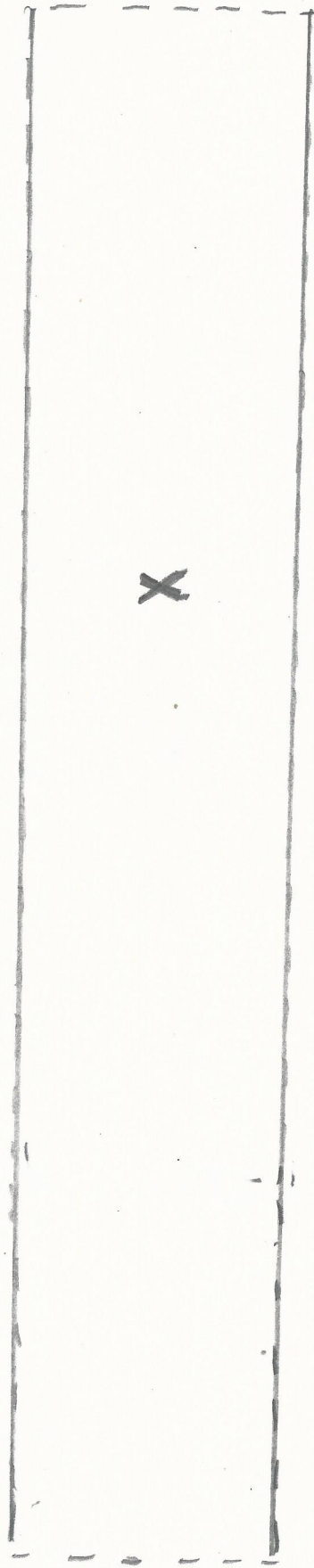
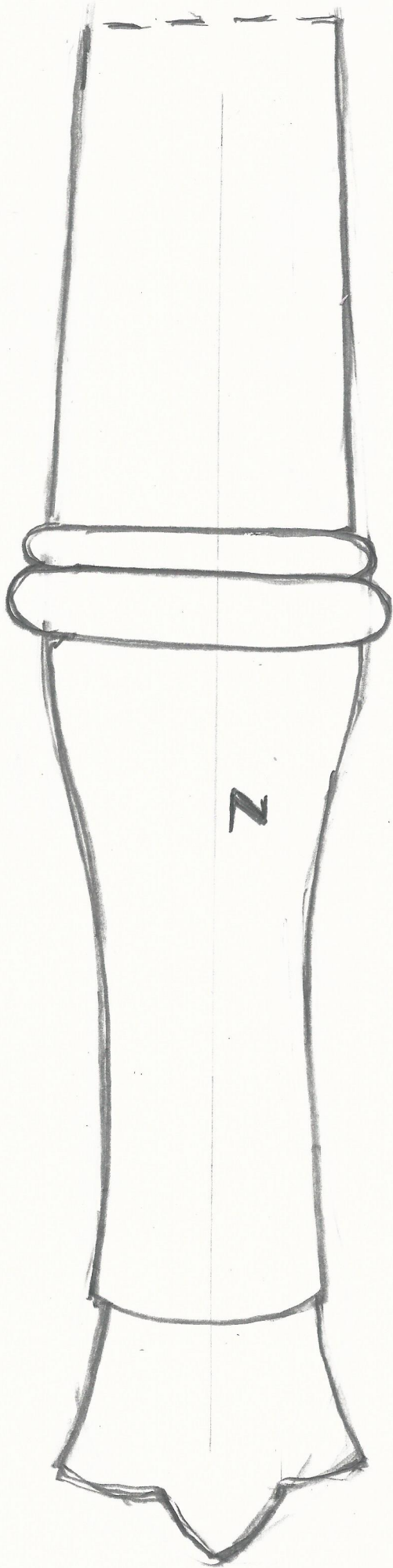
ASSEMBLE LIKE THIS

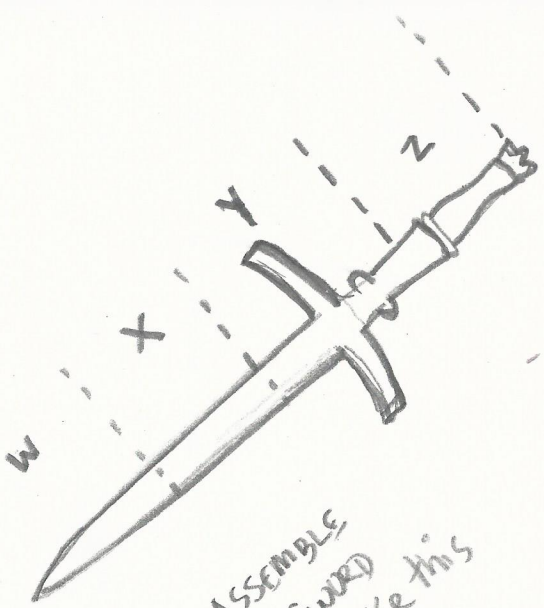




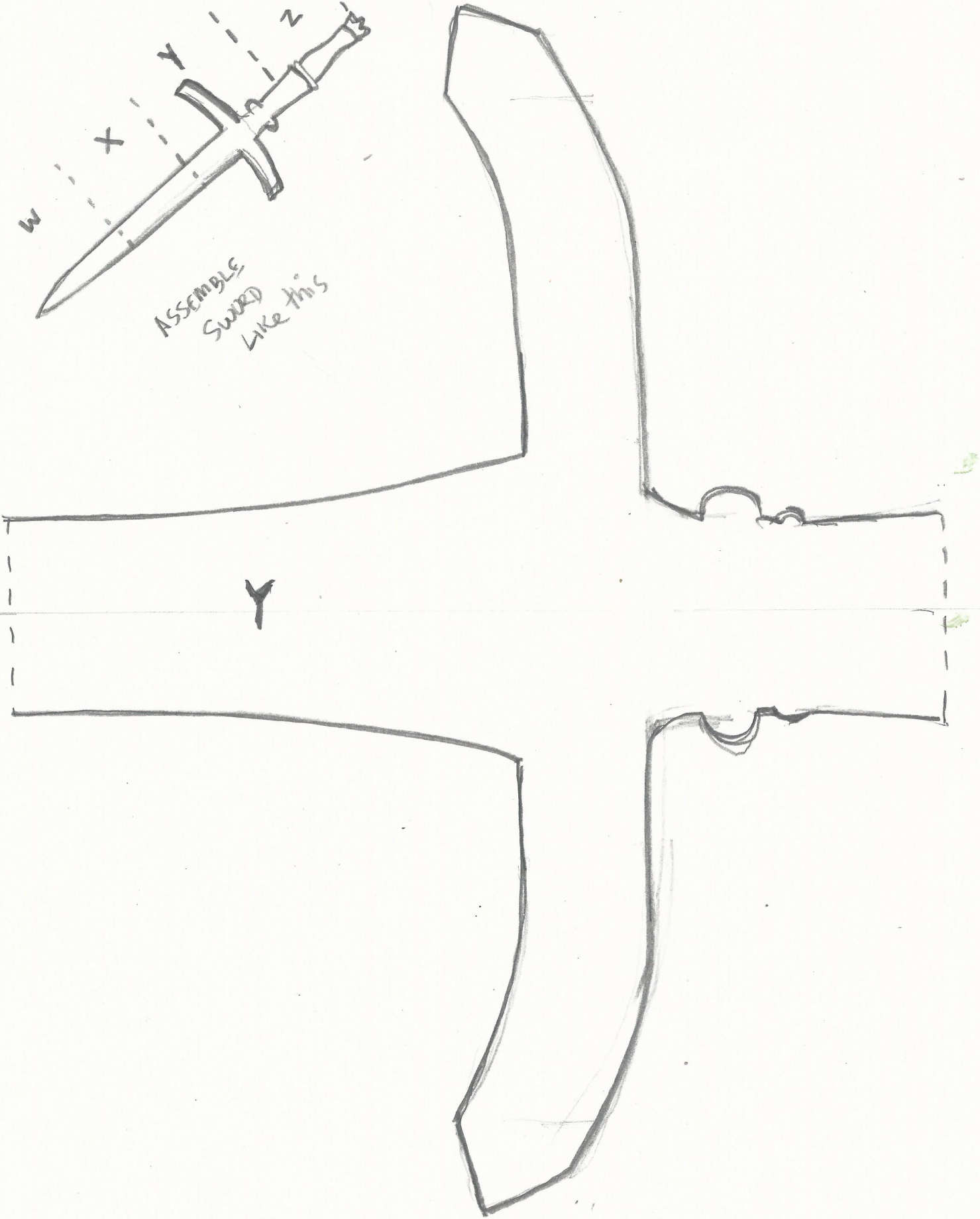


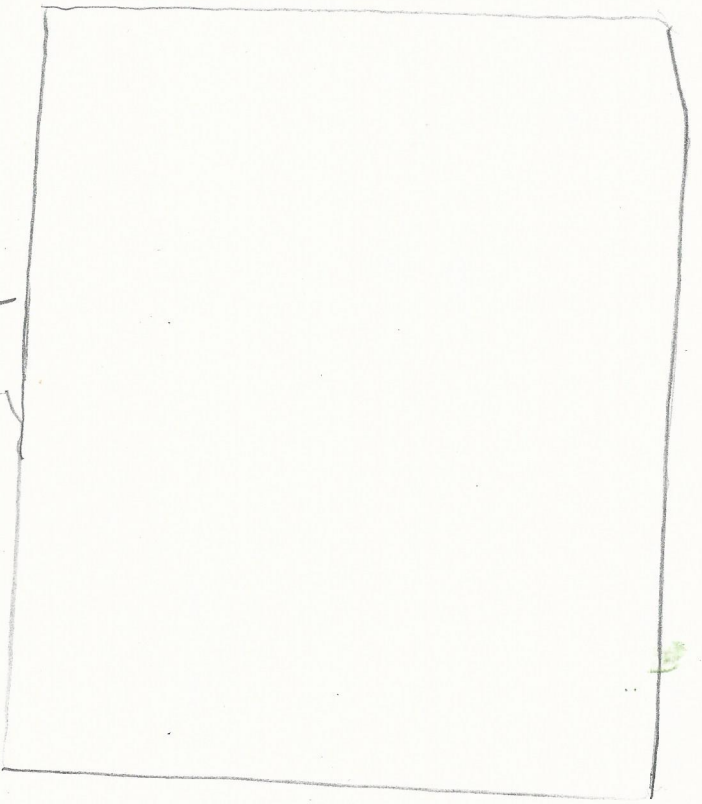






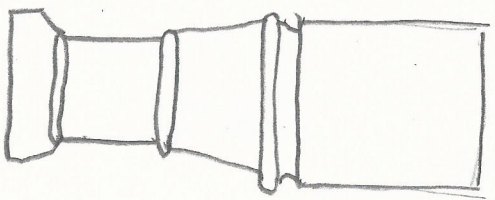
ASSEMBLE  
SWORD  
LIKE THIS



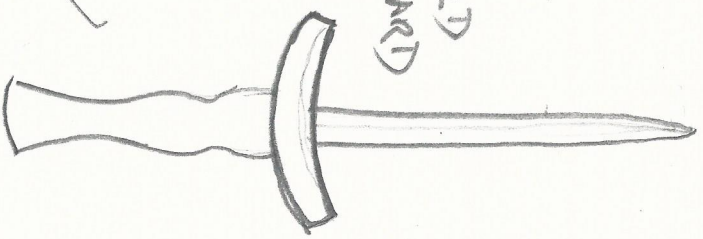


Hammer Head  
(The miniature)

Hammer Head  
this size  
Piece of foam  
About 2 inches thick



Handle  
foam  
About  
1 inch thick



Sword  
foamboard