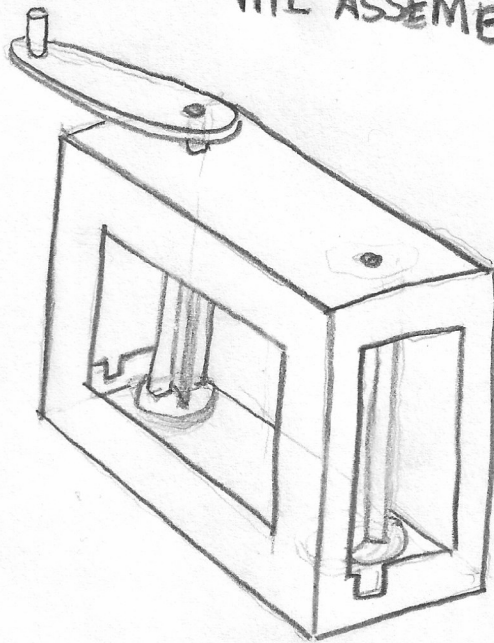


THE ASSEMBLED THEATRE

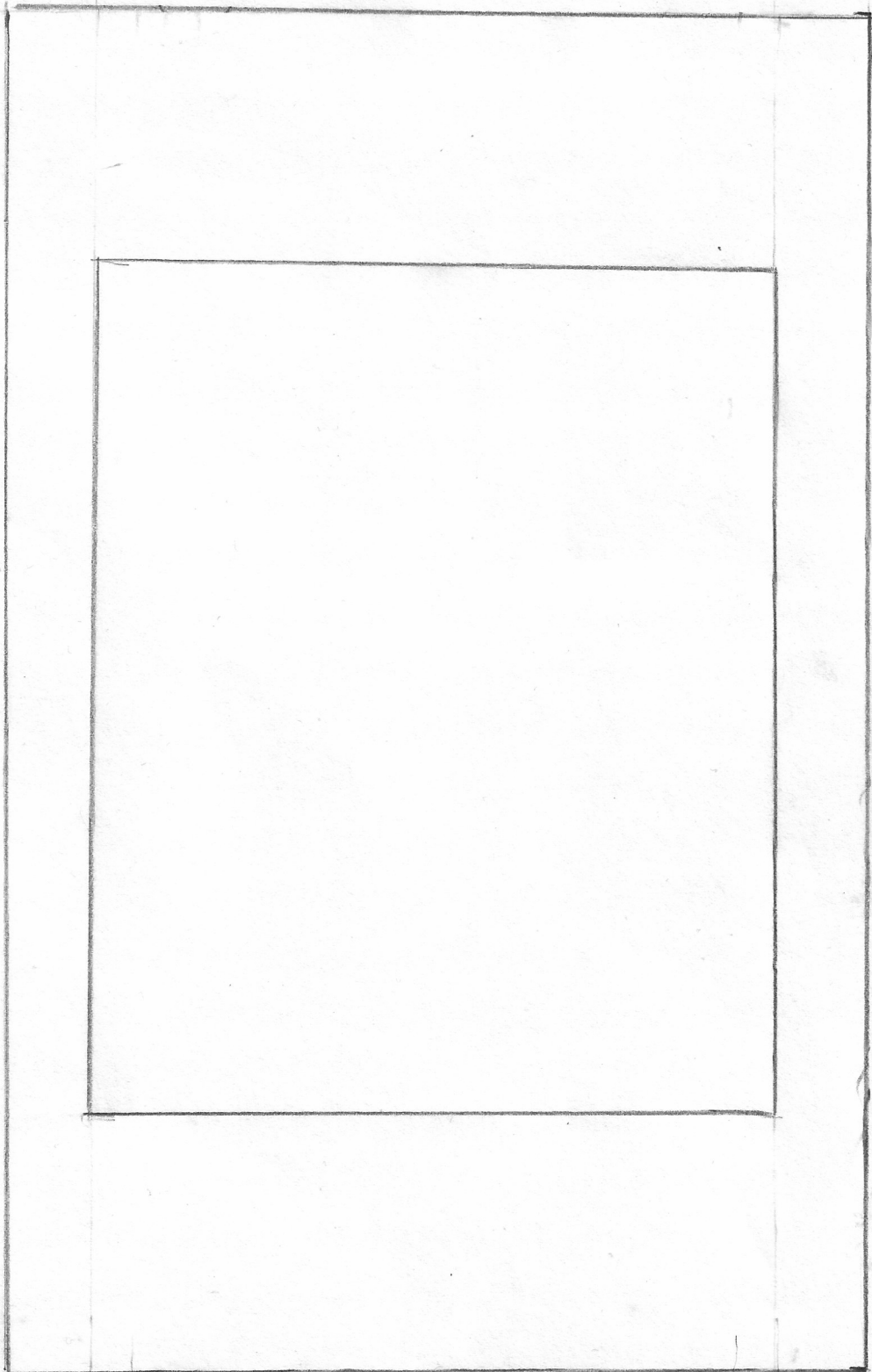


MAKE A
MINIATURE ROLLING PAPER THEATRE
TEMPLATE

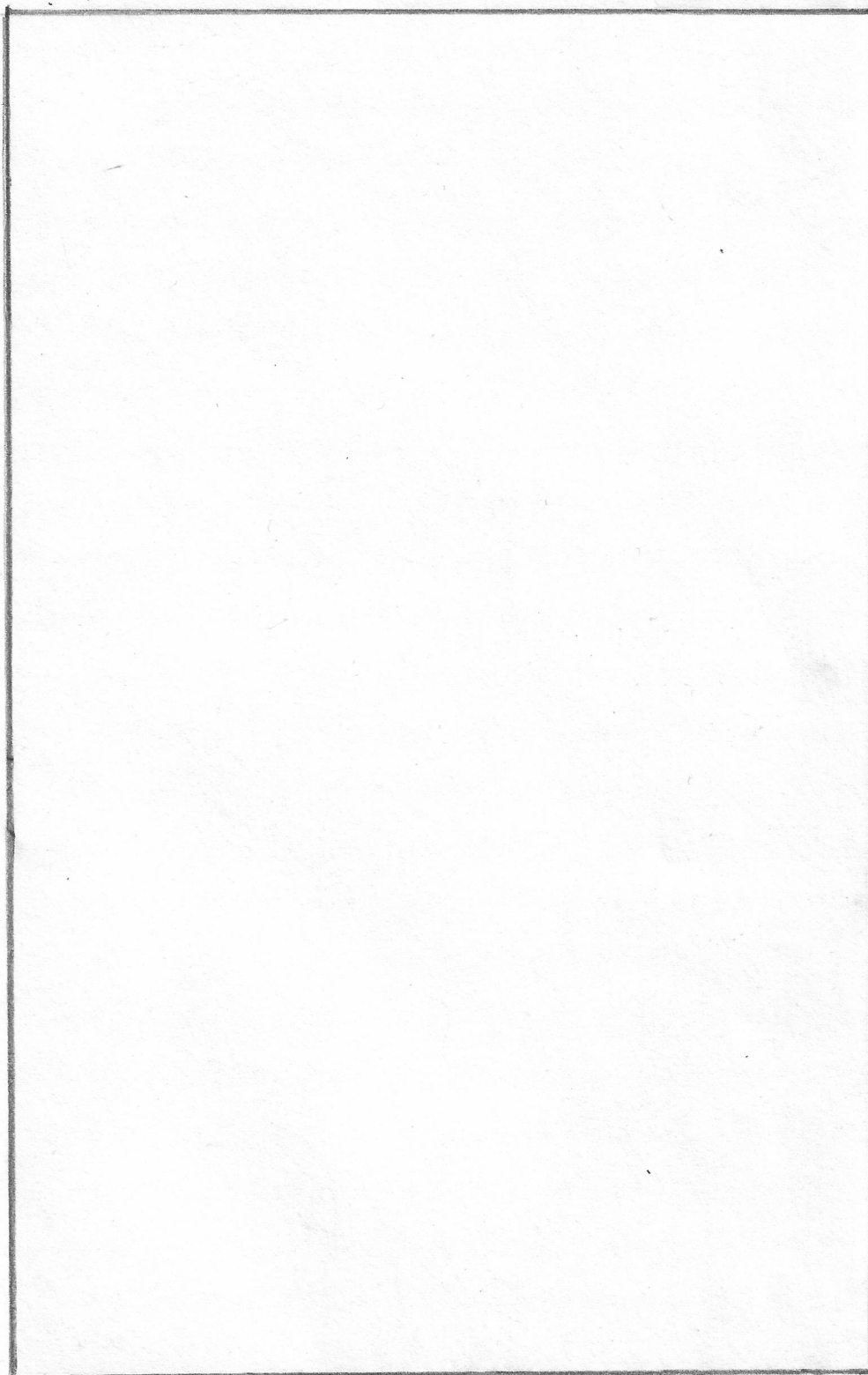
Includes Blank Script and Blank Storyboard)

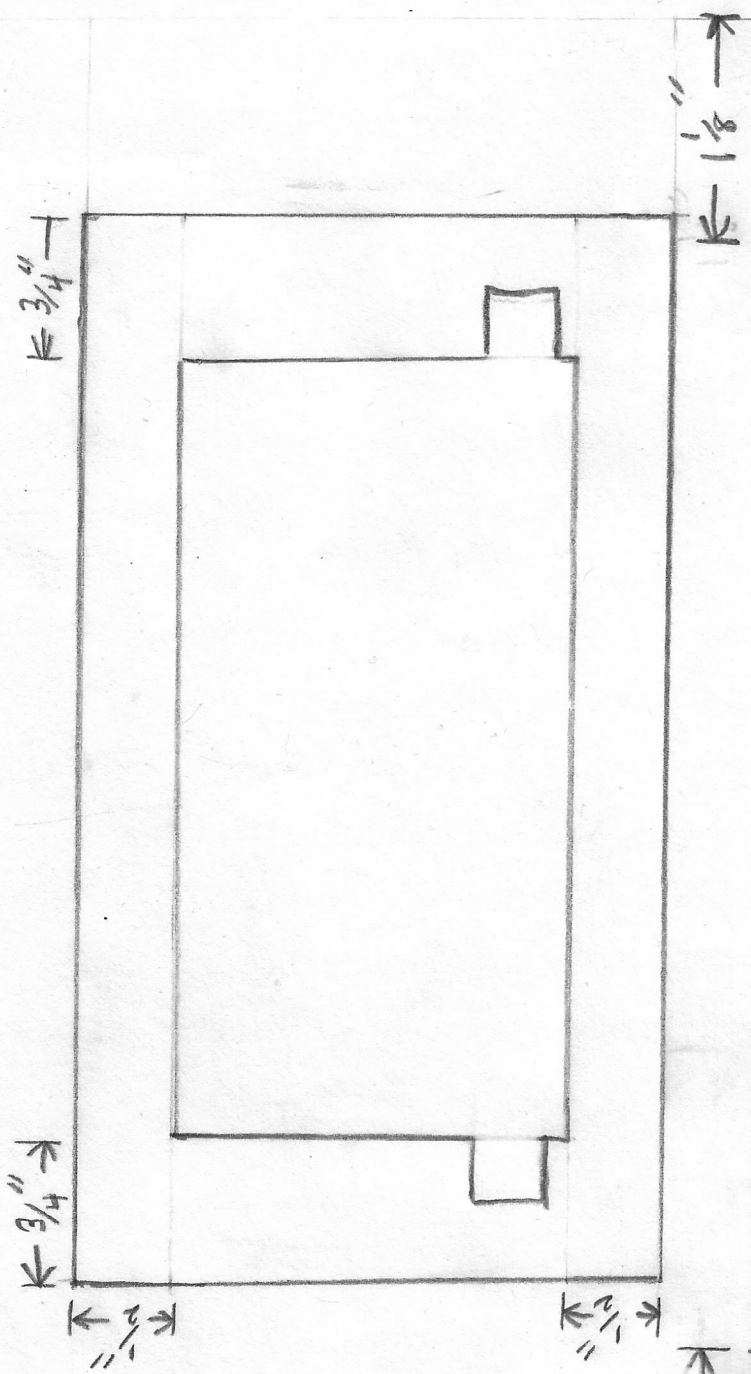
THIS TEMPLATE, ALL IMAGES and Project copyright © SteamTheCastle.com
ALL RIGHTS RESERVED)

FRONT OF THEATRE
OVERALL SIZE IS 8" x 5"

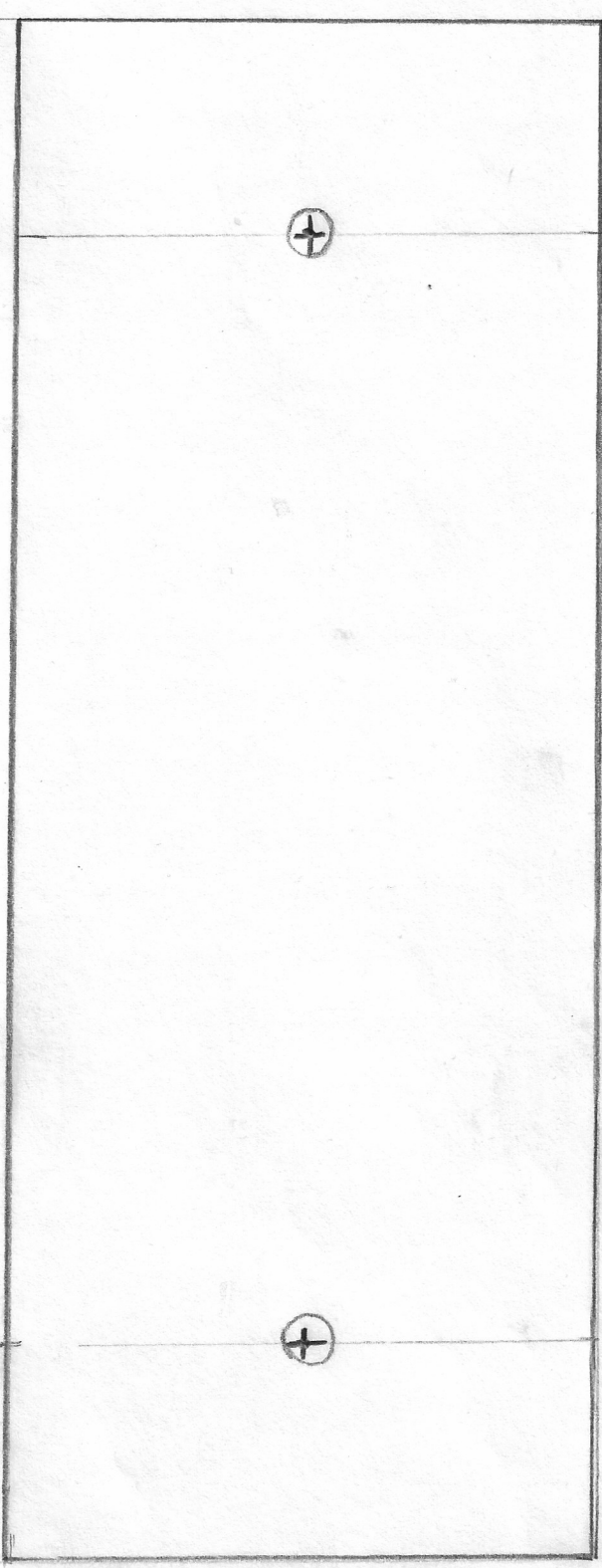


Back of theatre
8" x 5"

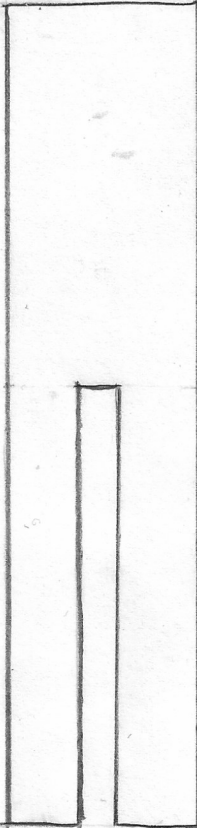




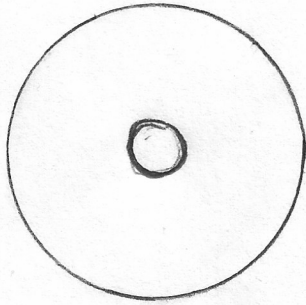
SIDES
 $3 \times 5\frac{1}{2}$
 MAKE 2



TOP AND BOTTOM (MAKE 2) $8" \times 3"$

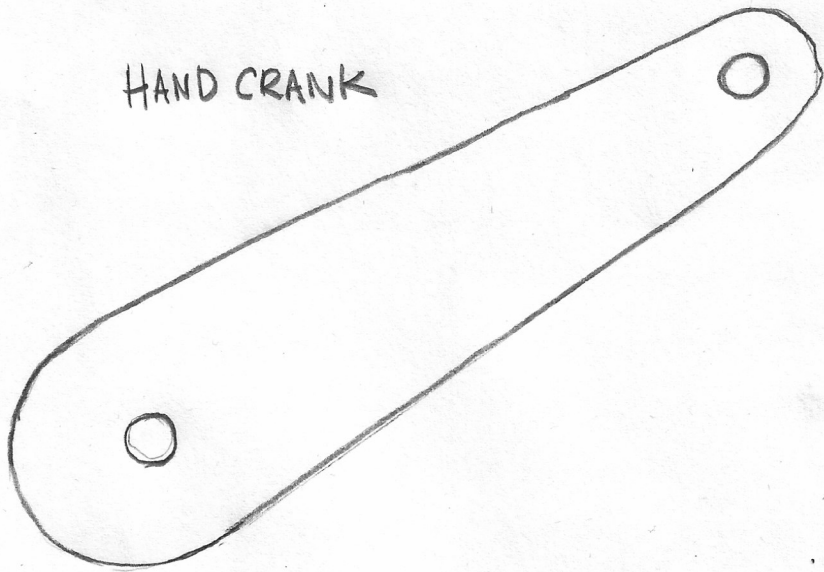


SPINDLE
MAKE 4
4 1/4" X 1"



SPINDLE END
MAKE 4

HAND CRANK



THE STORY

- WRITE OUT YOUR STORY IN SCENES.
- AS MANY SCENES AS YOU WANT.
- THEN DRAW OUT EACH SCENE ON THE STORY BOARD.

SCENE 1:

SCENE 2:

SCENE 3:

SCENE 4:

SCENE 5:

SCENE 6:

STORYBOARD

