

Make a Paper and Cardboard Medieval Castle

This is a complete project that shows you how to make a medieval castle out of paper and cardboard. It has you all you need, the templates and instructions. The project takes about 2-4 hours to complete depending on your skill level. And you have a lot of flexibility in how you decorate it.

This fun project and many others; as well as fun facts can be found at:

<http://www.stormthecastle.com>



Will Kalif

Parts and Tools Needed for this Project



- 3 Empty Cereal Boxes
- White Glue or paste
- 4 Bathroom Tissue tubes or 2 Paper towel tubes - if you use paper towel tubes cut them to 4 and a half inches in height so you have four of them (1 for each tower)
- Scissors
- Masking Tape (optional)
- 7 Page printout of the castle design and parts (included here) after instructions and tips.

Some General tips about making the castle before you begin:

About Glue: You should always use the glue very sparingly. If you use a lot it will distort the paper and the cardboard a bit and make it look a bit wrinkled.

About the Cardboard cereal boxes: You can make this whole project without using any cardboard. You can just cutout, fold, and glue all the different paper parts together but this is very challenging! It takes a deft hand and very minimal glue. Best results are if you use cardboard. It will add stability to your castle.

Coloring the castle parts: You can color all the parts and add designs after you print out the pages and before you build the castle (this is preferred if you are going to be using crayons). Or you can build the castle then color it in after it's done (This is preferred if you are going to be using water colors or paints).

The Castle Base: It would be better (for strength) if you can glue the base of the castle to a thicker corrugated box type cardboard. If you don't have any then cereal box cardboard will be fine.

Extras: Here are some suggestions for making your cardboard and paper castle better.

- Add a blue construction paper moat around it
- Make another building and add it into the model.
- Add small toy figures
- Paint a small garden on the inside of the castle
- Paint the courtyard a dirt or sand color

Step 1: Printout and cut out all the various shapes from the booklet of parts. Glue these parts down onto the cereal box cardboard. Once the glue has dried you can then cut out the cardboard shapes. Leave the paper on! You may want to glue the paper to the colored side of the cardboard. It will hide the color and will make painting the castle easier.



When gluing the castle parts to the cardboard use a liberal amount of glue all over the cardboard but keep it thin (not big globs or lines) and use a cotton swab stick to spread it around.



Glue the tower walls to your four tower tubes. They should be four and a half inches tall. Cut out circle tower tops and fold them into cone shapes. use a very small amount of glue to do this. Finally, apply glue to the top of the towers and glue the tower cones on top!



The tower is completed. Hold your finger on it for a minute to allow the glue to take a firm hold.

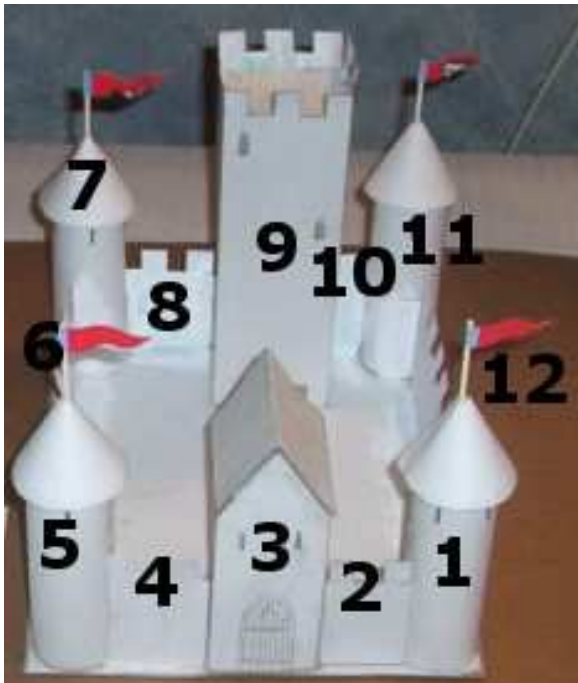


Bending Tip: When bending the various sharp edges of your castle use a rule or a piece of wood. It will help you keep all the edges straight and sharp.



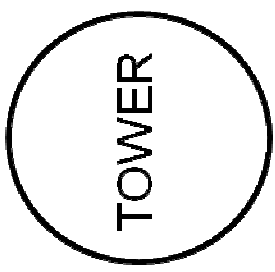
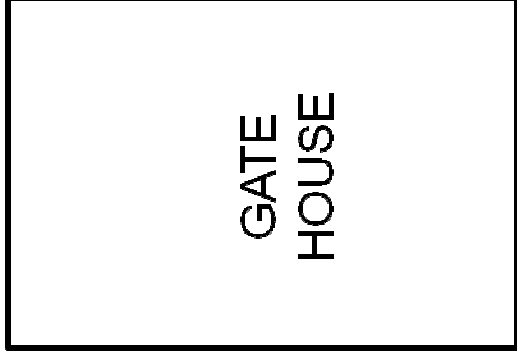
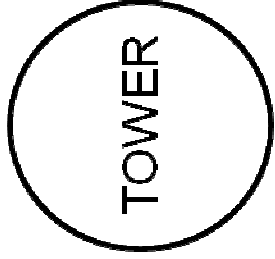
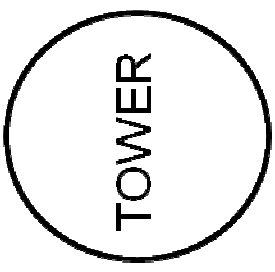
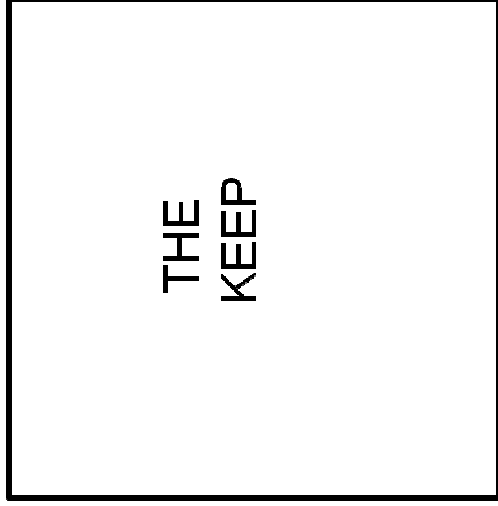
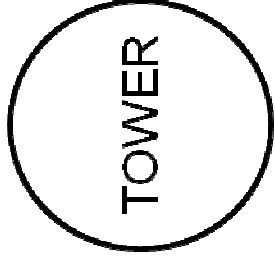
Now cut out the tower keep, tower keep roof, and the gatehouse. Fold them up and glue them. Glue the roof of the keep into the tower keep. I folded the keep but didn't glue it closed, I then glued three edges of the roof into place and finally glued the tower closed.

Now you are ready to glue all your parts to the base of the castle. You should have a keep tower (biggest) a gatehouse, 4 round towers, and 6 tower wall sections.



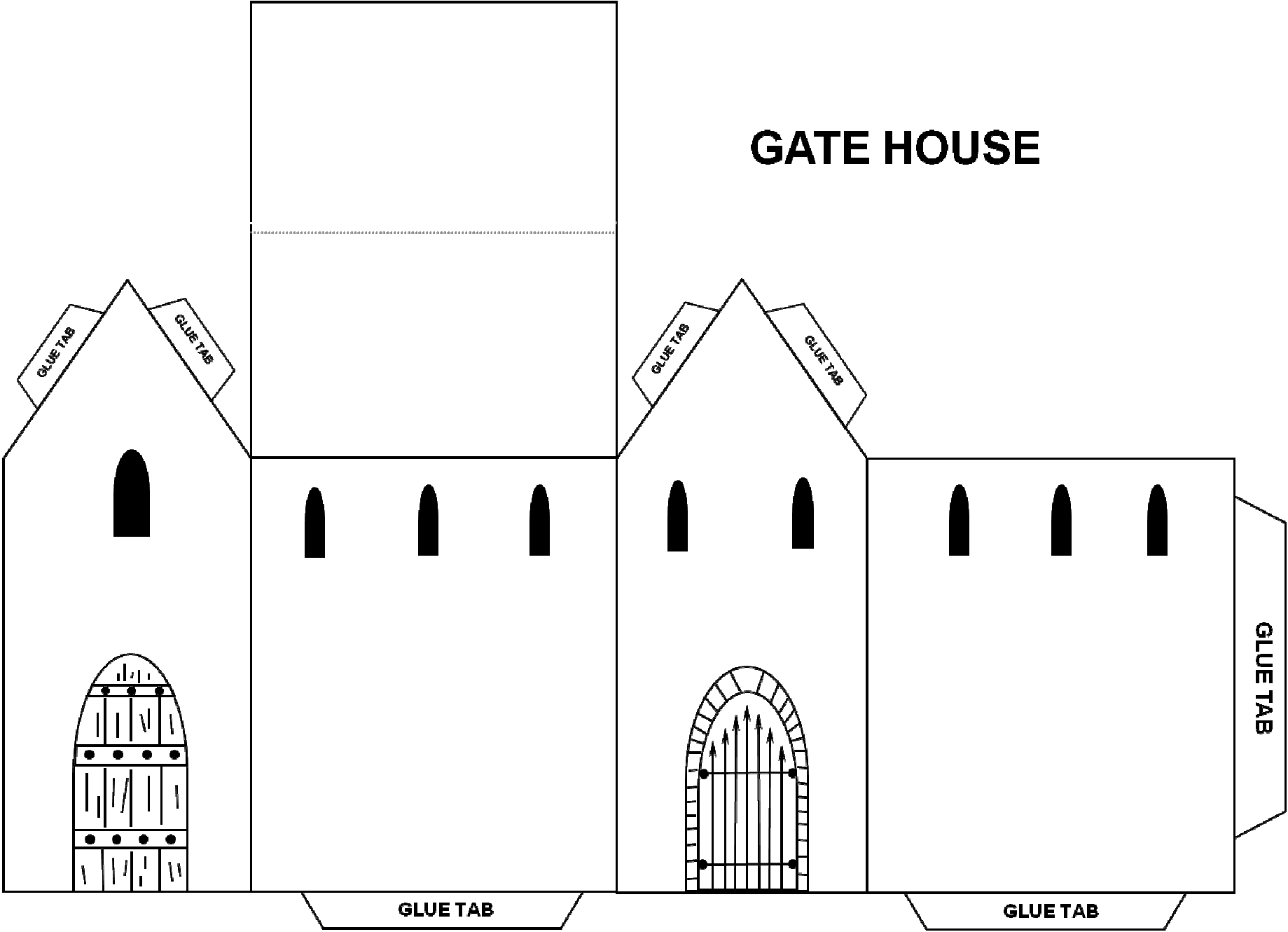
For the best looking results you should glue the parts to the base in a linear sequence something like I have shown here. Glue the tower labeled 1 down first. Then glue the wall section (2) to it. Then glue the gatehouse, then section 4. Continue all the way around until you are done. Doing it in sequence like this will give you the best results in look.

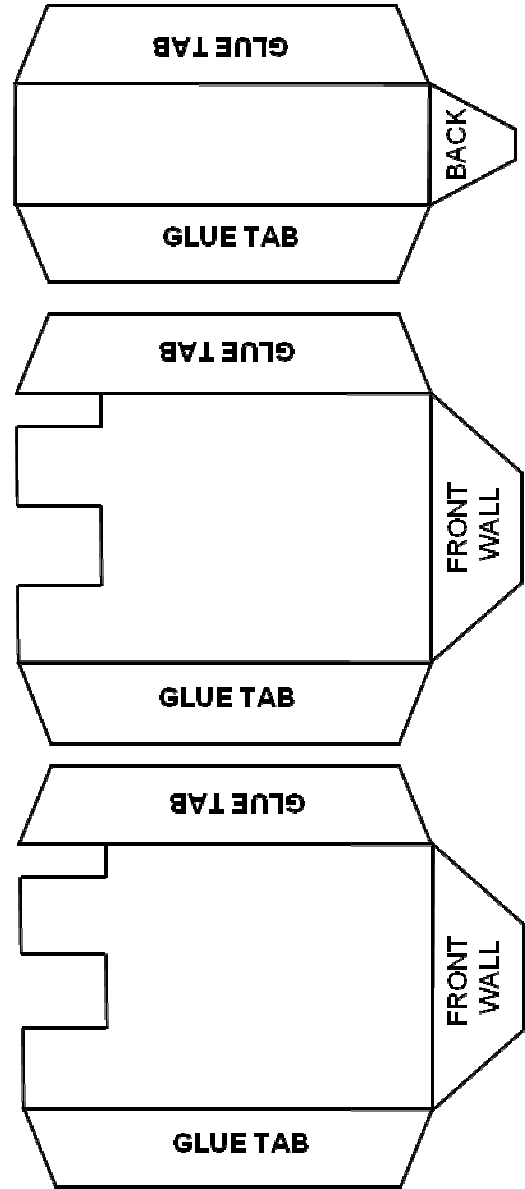
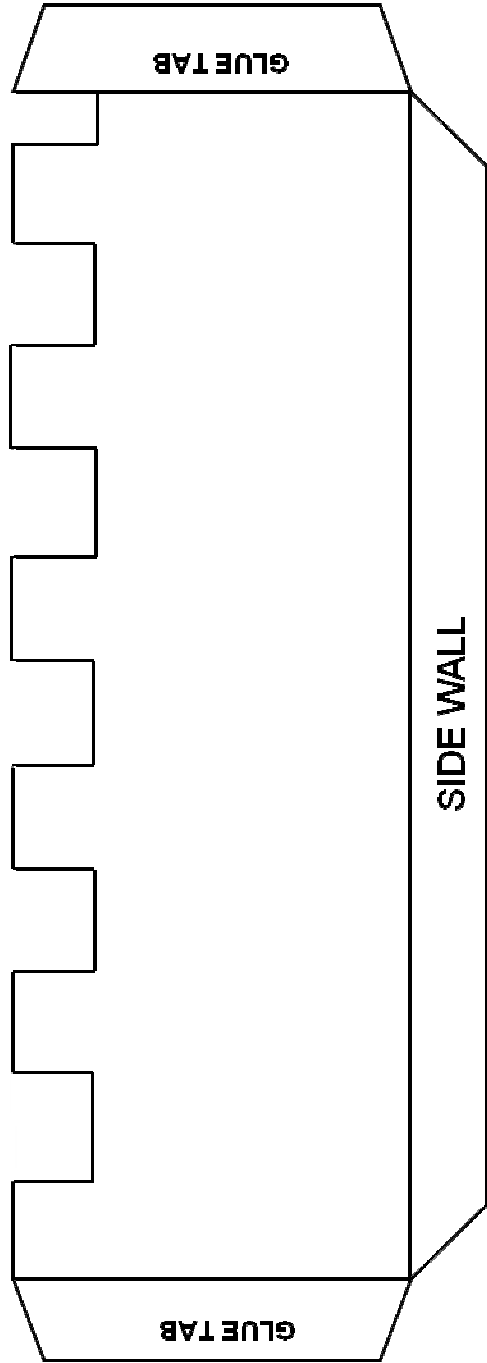
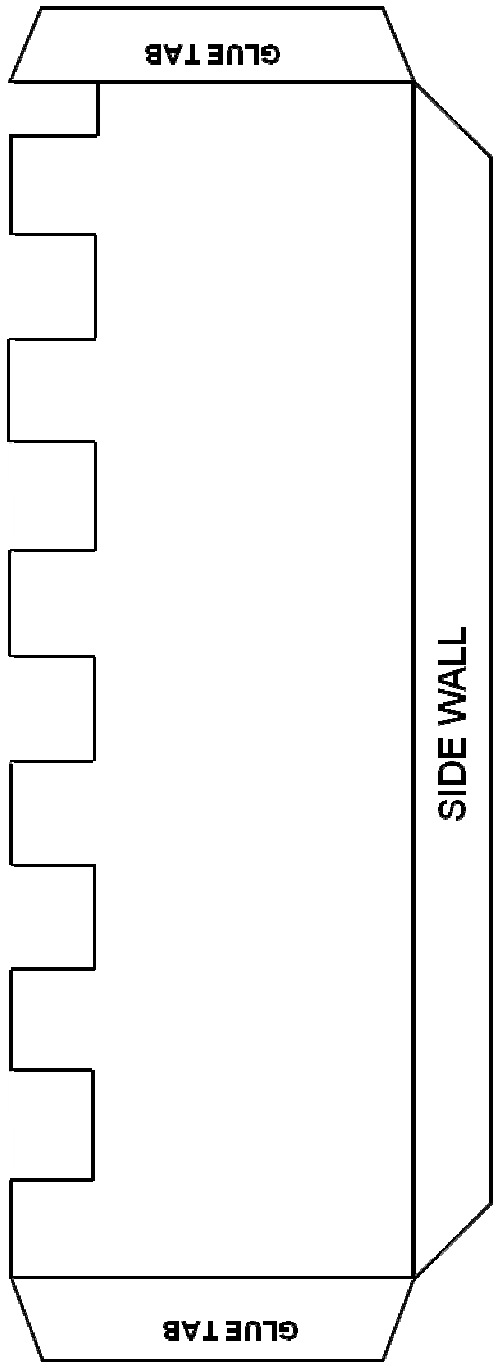
Finally, Cut the tips off the tower tops and glue a toothpick or trimmed cotton swap stick into it. These are the flag poles. Finally glue your flags onto the poles. (Paint or color the flags first!)



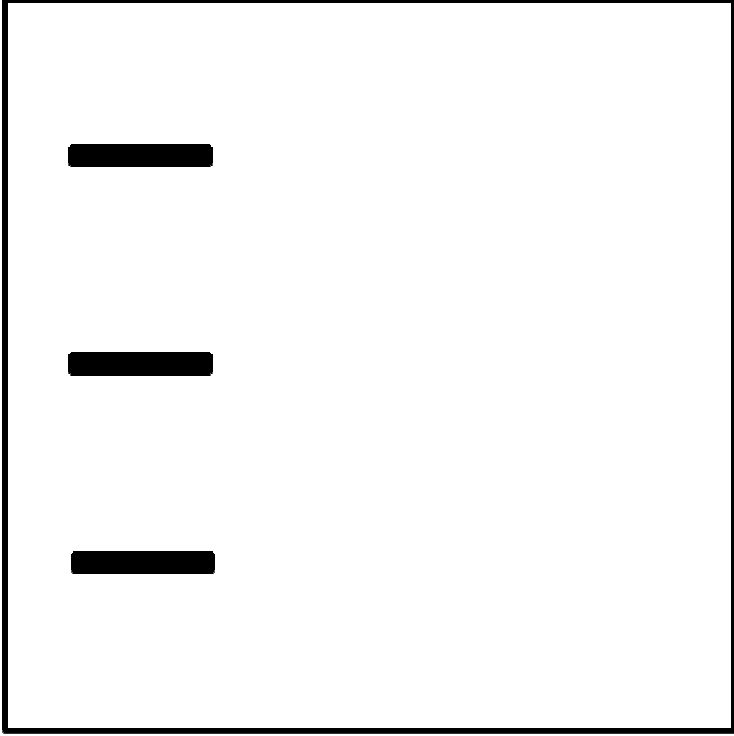


GATE HOUSE

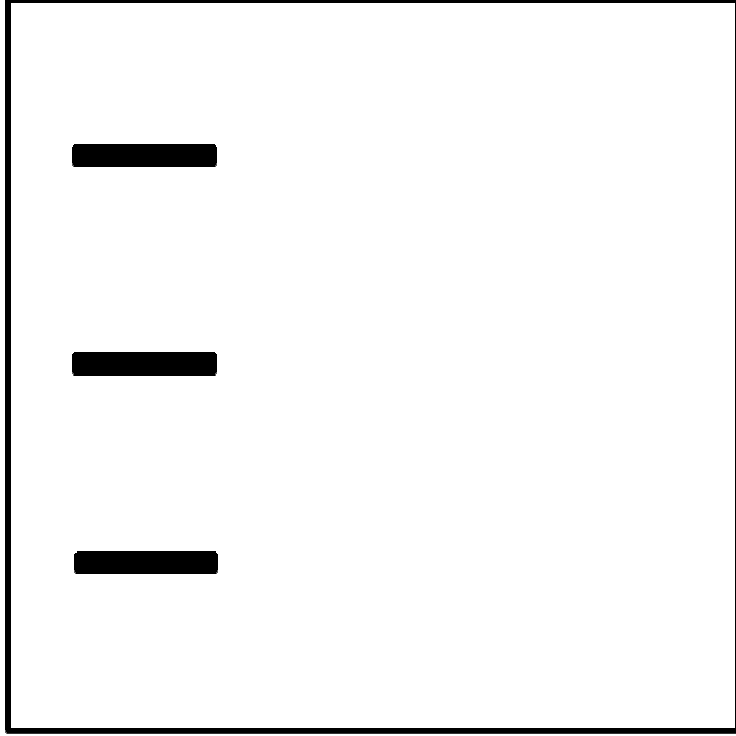




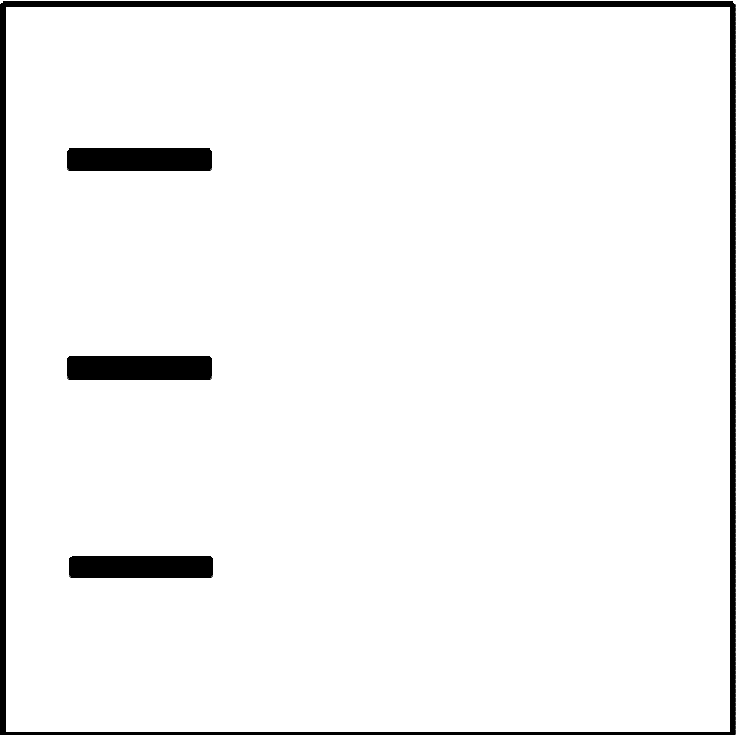
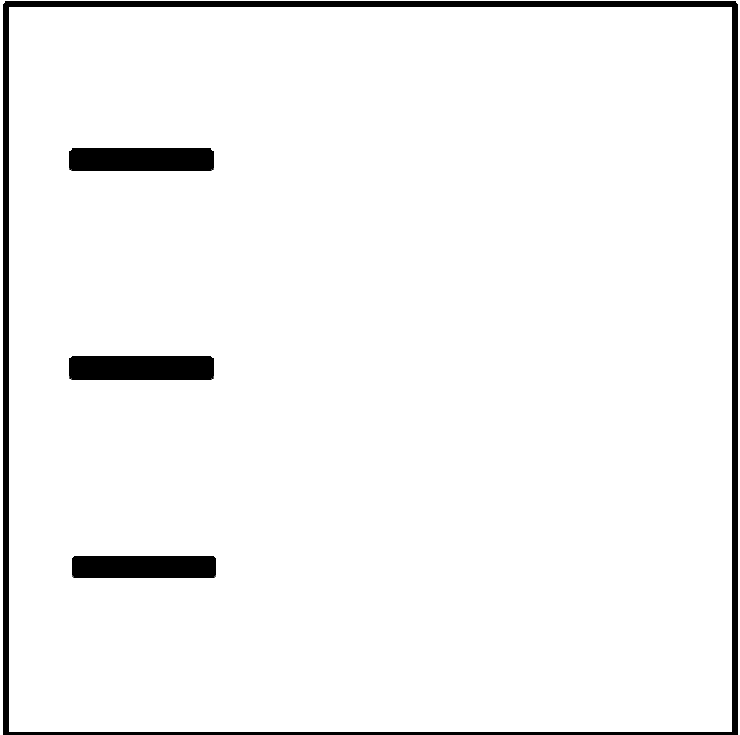
WALLS

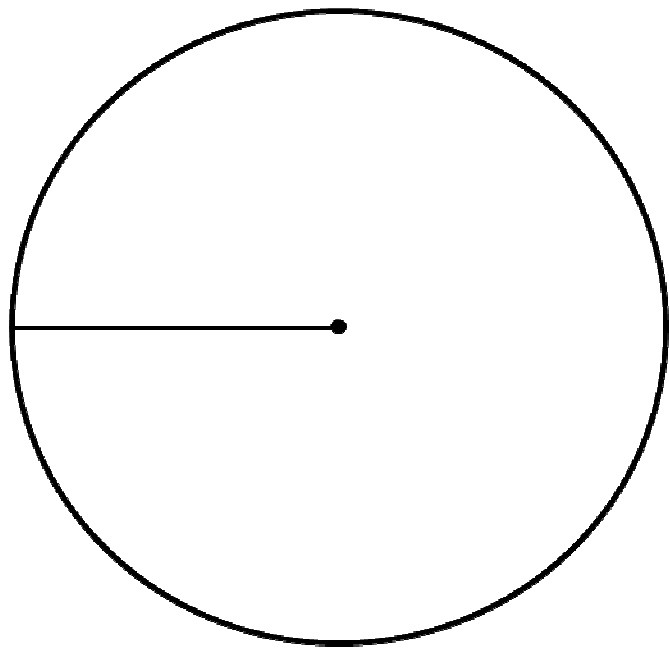
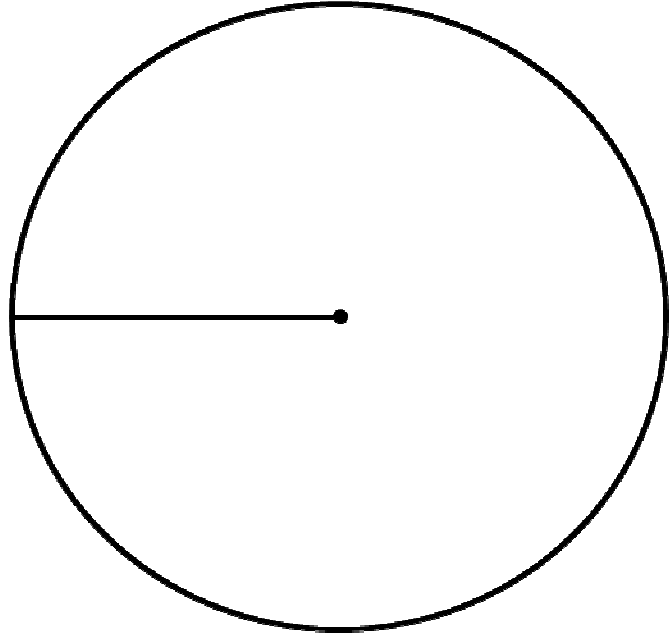
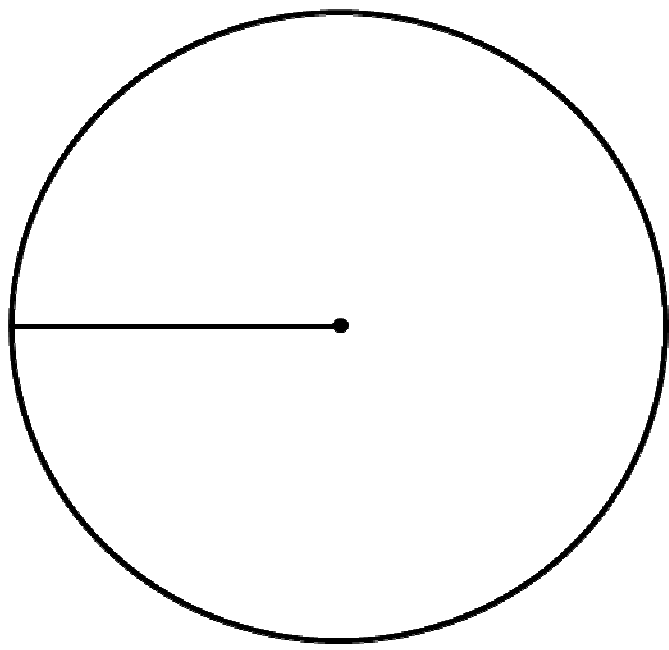
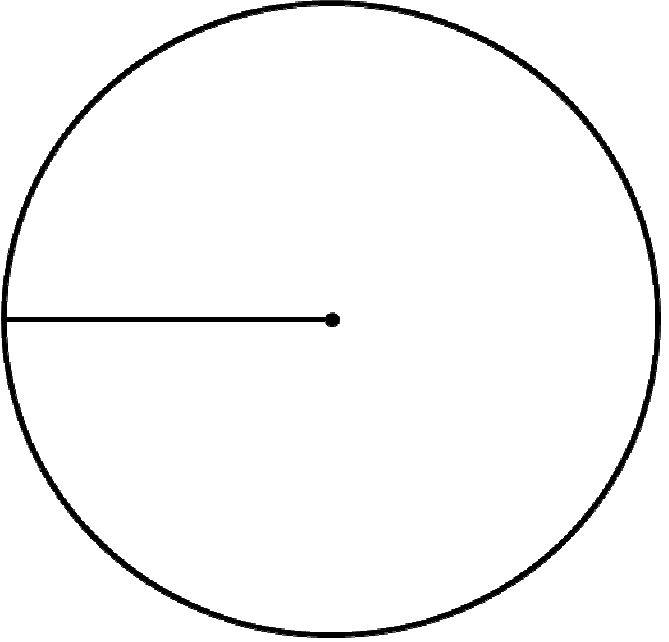


**TOWER
WALLS**

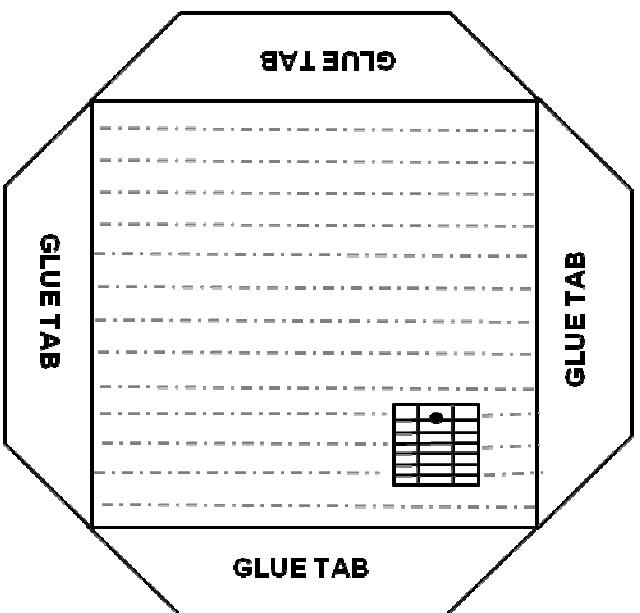


**TOWER
WALLS**





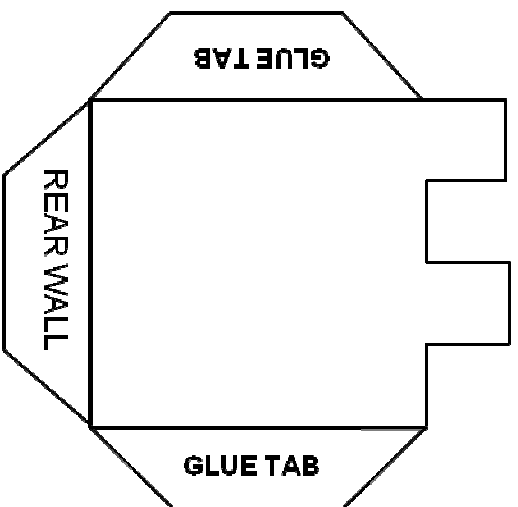
TOWER ROOFS



ROOF OF TOWER KEEP



FLAGS



Fun learning examples for the Paper Medieval Castle you made

Medieval Castles were an architectural style that developed over several hundred years during the Middle Ages. They were a necessity to keep the people inside safe from enemies and they developed many ingenious ways of defense.



The Moat: Castles often had a moat around them. But this wasn't because it made it hard to cross over. The moat's main purpose was to prevent enemies from tunneling under the castle. The water would flood any attempted tunnels.

The Gatehouse: The front door of any castle was usually the weakest point and the gatehouse was a way to fix this problem. It was very strongly built, with thick walls and often had a series of doors and gates. If an enemy broke through the first door they were in a little chamber where the castle residents could throw projectiles and fire arrows down on them. The gatehouse was a very big trap!

The Round Towers: In later centuries of castle making they made the towers round and this was a big advantage because the people in the towers had a better view of the ground. Square towers caused corners that couldn't be looked around.

The tall thin windows: These were made so defenders could shoot arrows and still remain reasonably protected from attack.

The Big Tower Keep: This was a strong safe building inside the castle and was the last resort where the castle inhabitants would go if the outer castle wall was breached.

The Battlements along the top of the walls: These strange tooth shapes at the top of the castle walls were very important. It allowed people to stand on the wall, look down and still be protected.