

Halloween Tatebanko Project

Copyright 2010 © StormTheCastle.com

All Rights Reserved This project cannot be copied to any website or used for commercial purposes without the express written consent of the author Will Kalif. Educators are free to copy and print for classroom use.



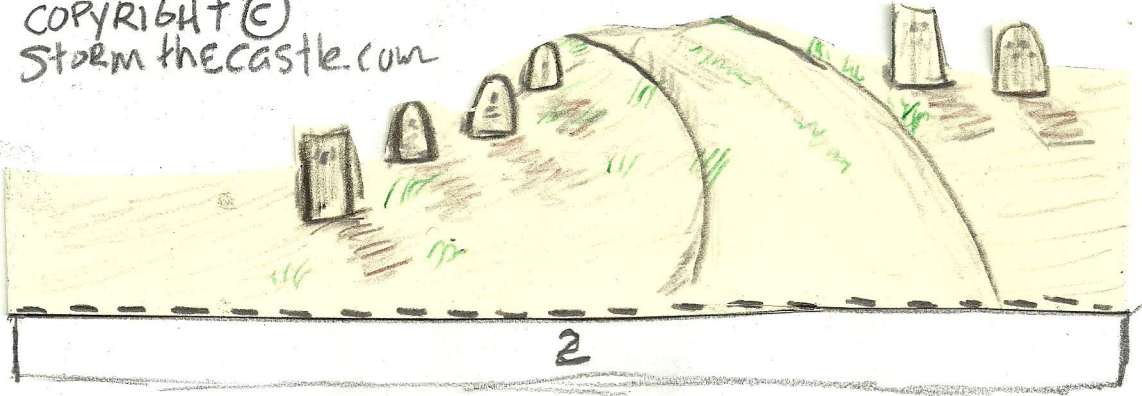
Instructions: Print up the whole packet and be sure your printer is set to print at 100% if the images are scaled to any other size you will have difficulty assembling it correctly.

Cut out all the various piece that make up the box and the inserted stand ups. Glue all the internal pieces like the hill, gravestones, gate etc, to the bottom piece then build the box around it.

More tatebanko Stuff on my website:

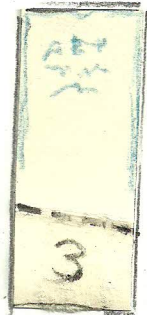
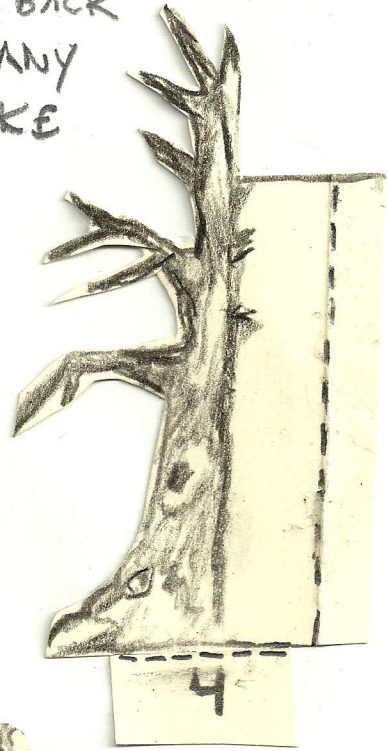
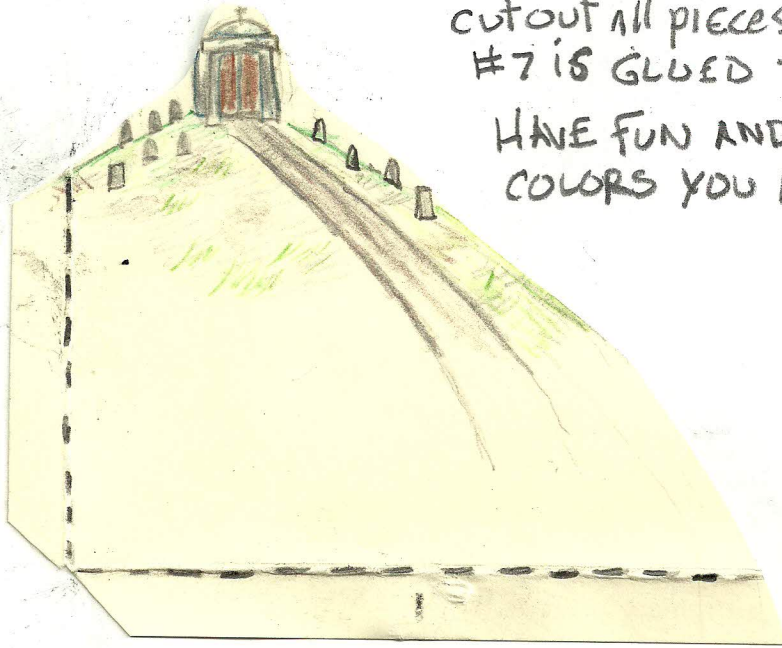
<http://www.stormthecastle.com/Things/tatebanko.htm> (Note that the word "Things" has an uppercase T.)

HALLOWEEN TATEBANKO
COPYRIGHT ©
Storm thecastle.com

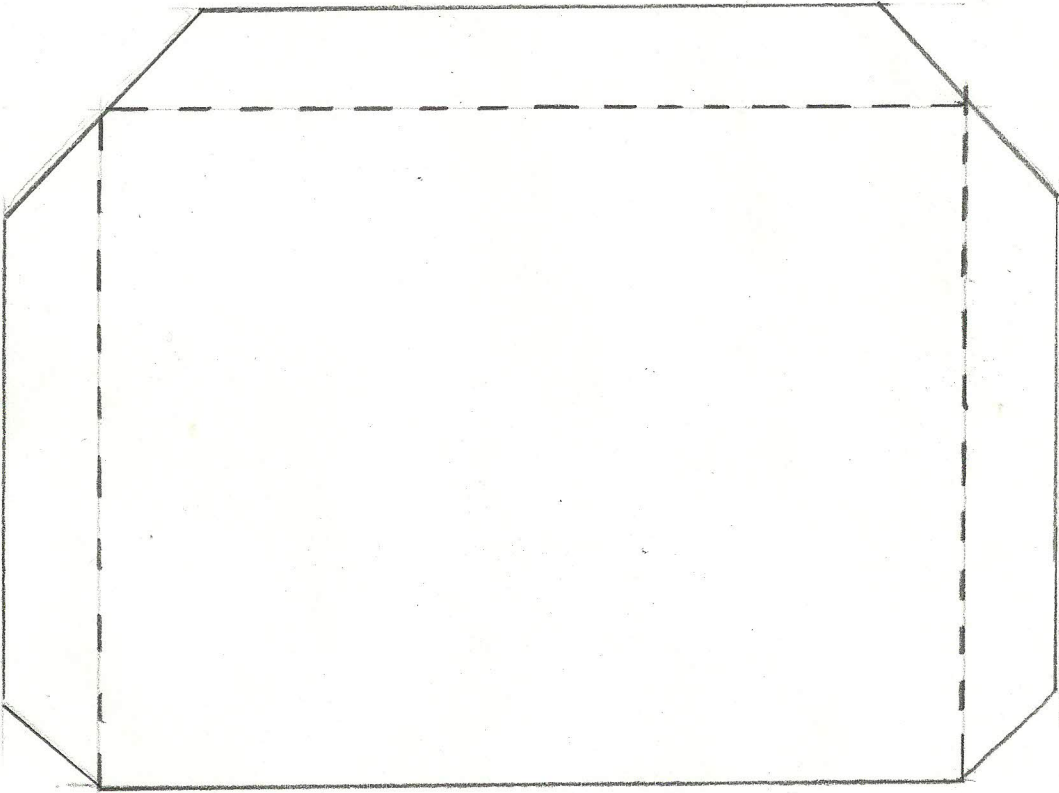


--- DASHED LINES ARE FOLDS
CUT OUT ALL PIECES AND GLUE TO BASE
#7 IS GLUED TO BACK

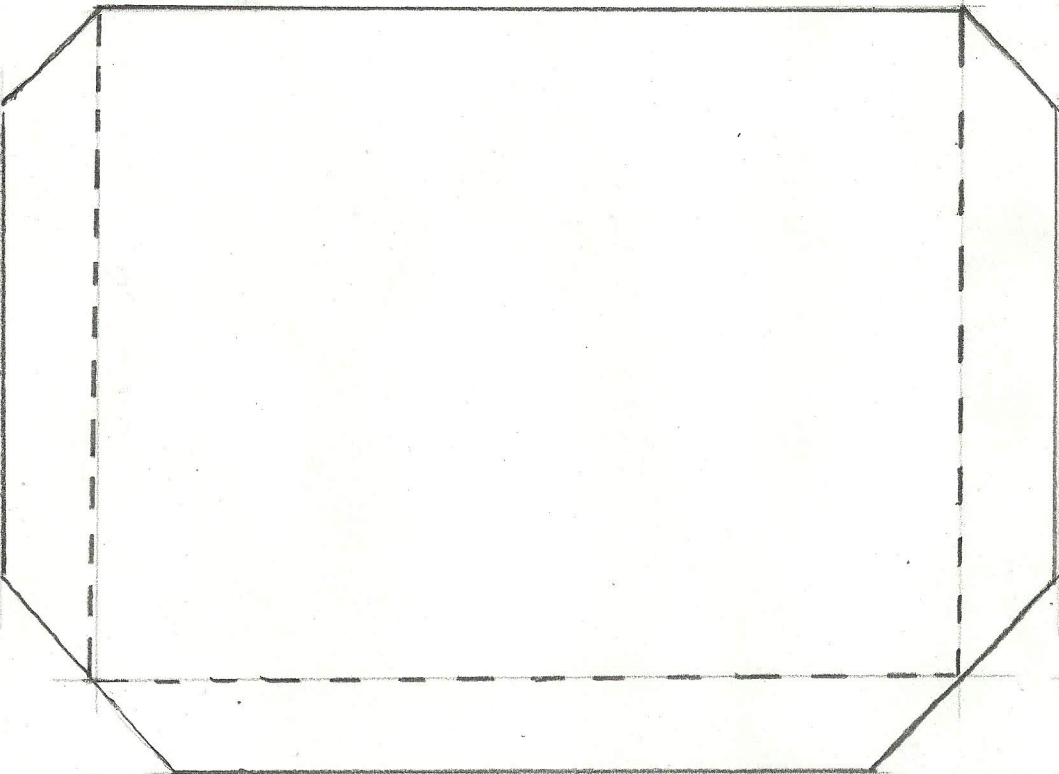
HAVE FUN AND ANY
COLORS YOU LIKE



LEFT SIDE



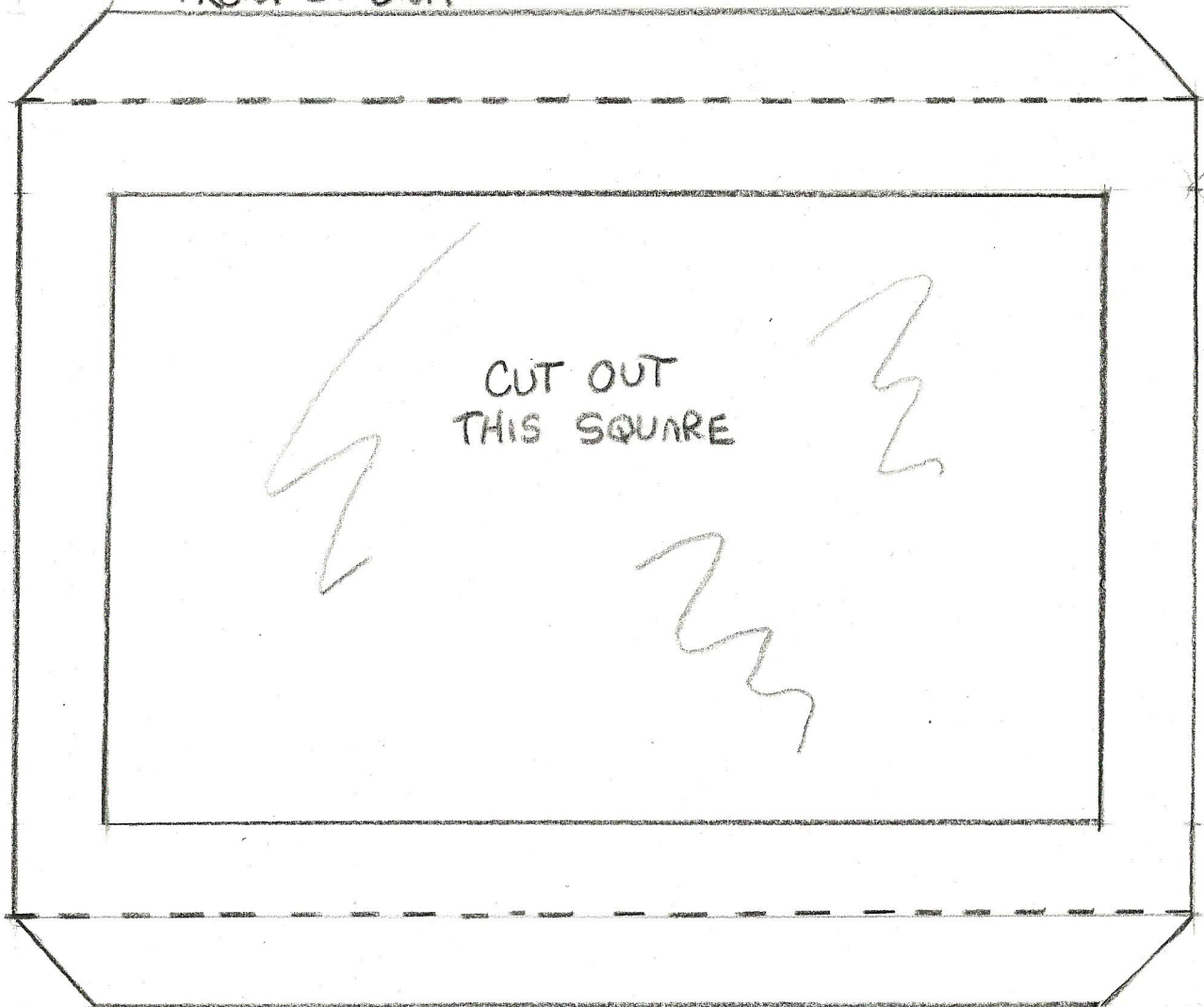
RIGHT SIDE

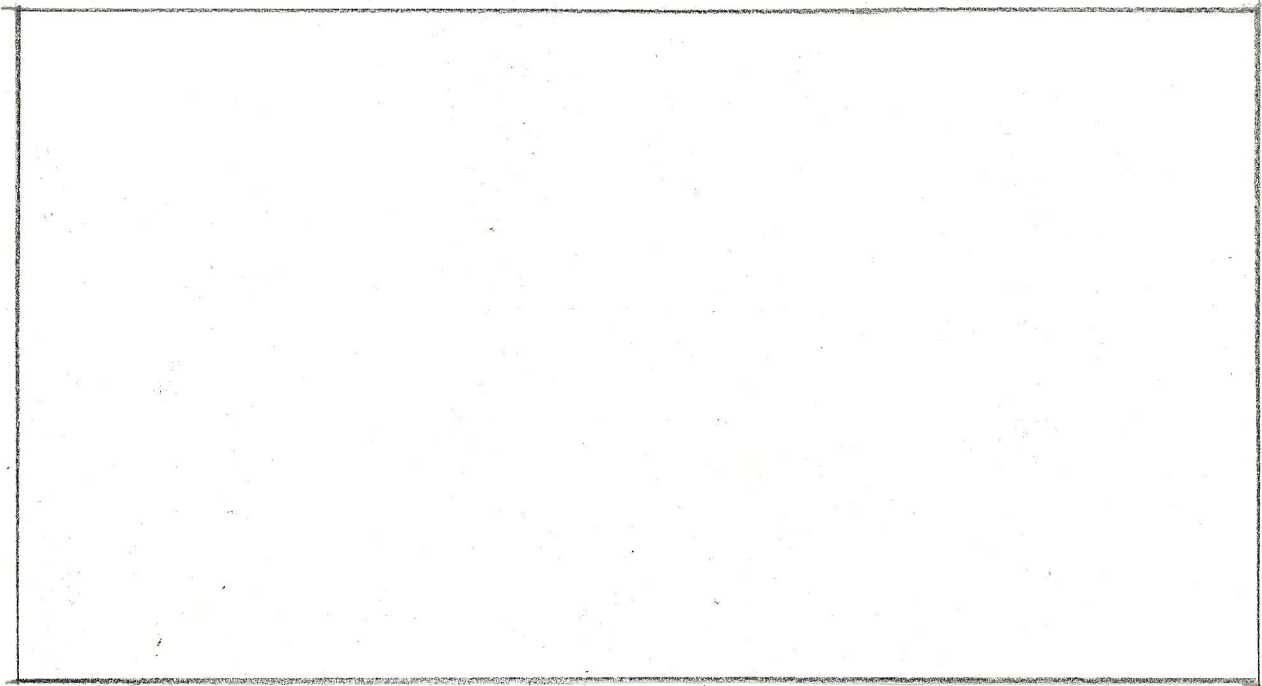


Bottom of unit



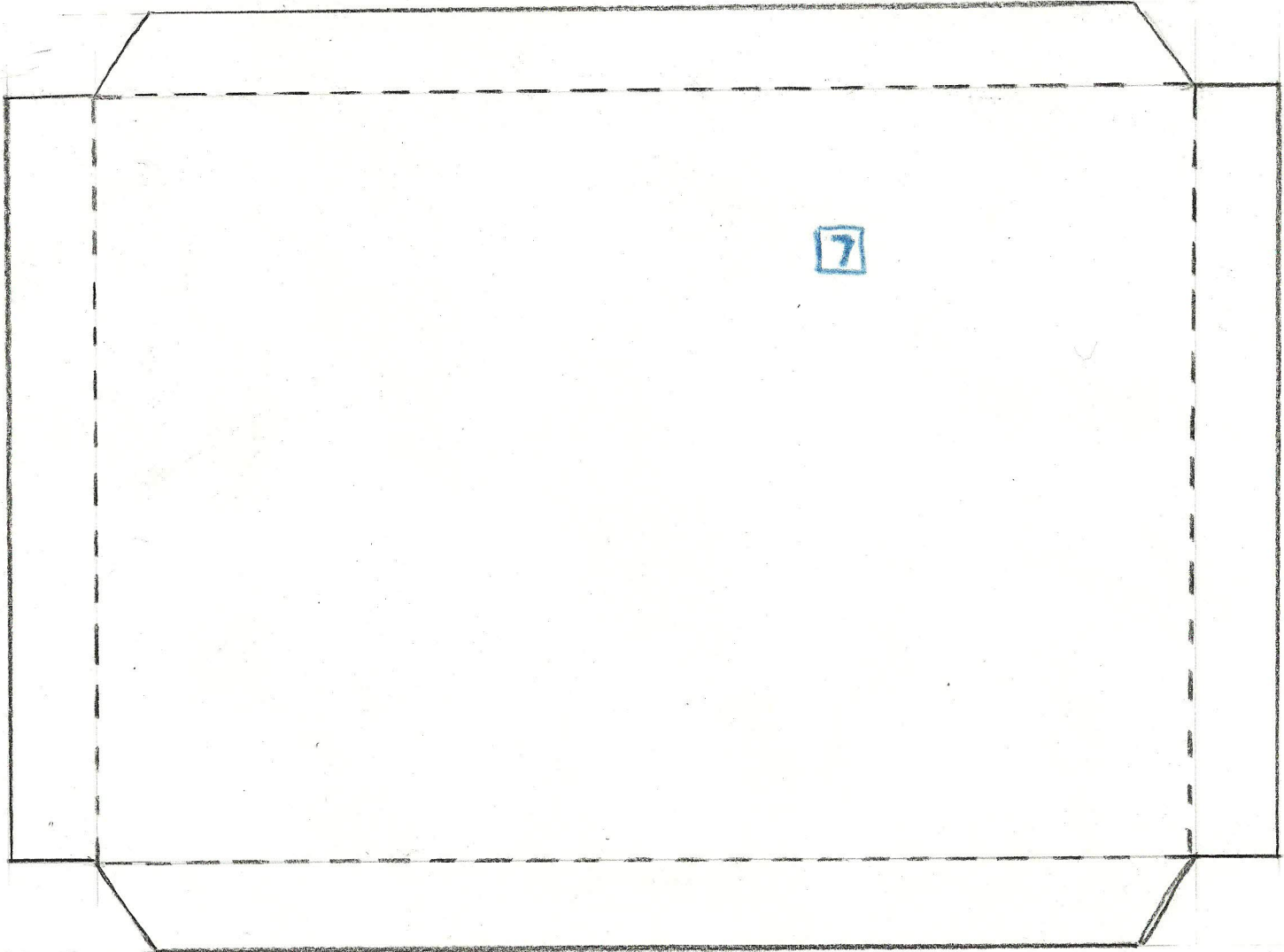
FRONT OF UNIT





TOP OF UNIT

BACK OF UNIT



7